
Microsoft Internet Explorer (IE)

Contents

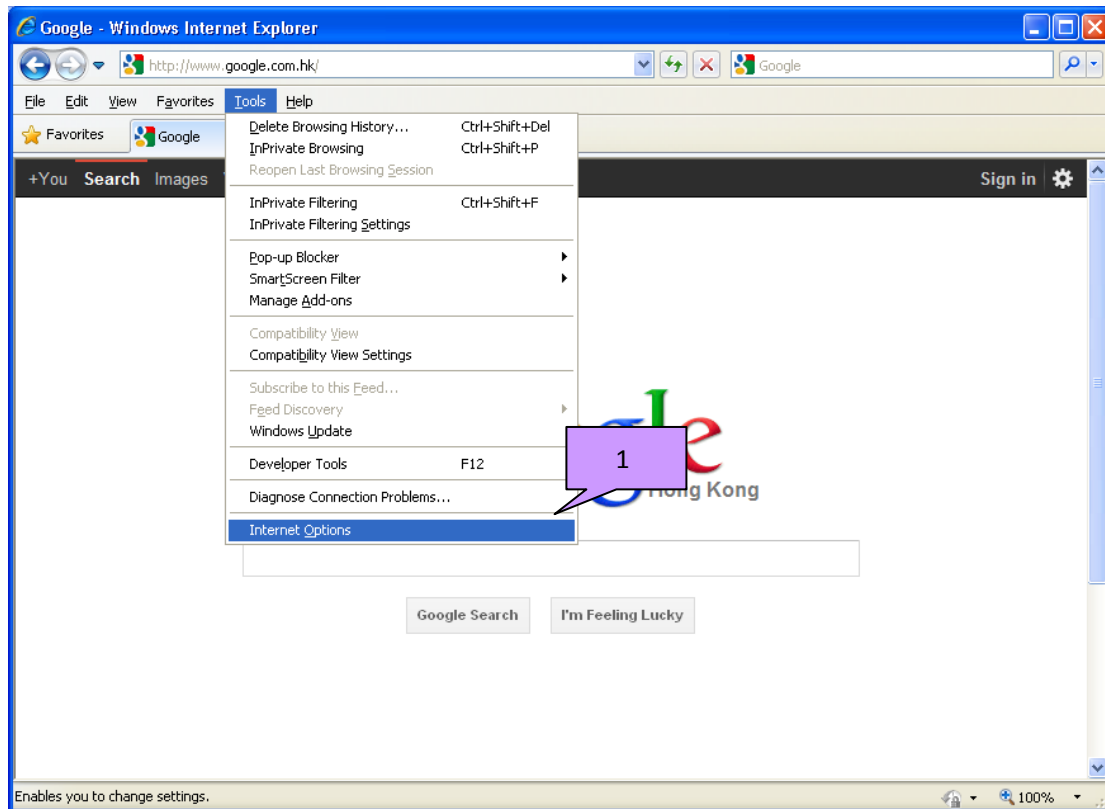
1. Installing the IE Plug-in and Login	2
2. System Instructions	6
2.1 System Menu Tree	6
2.2 Shortcut Menu.....	7
2.3 Main Menu	8
3. Operating of Main Menu	8
3.1 Playback.....	8
3.2 Log	9
3.3 Device Configure	9
3.3.1 Record.....	12
3.3.2 Alarm	13
3.3.3 System	17
3.3.4 Advanced.....	23
3.3.5 Info.....	30
3.4 Local Cfg.....	31
3.5 Logout.....	33

1. Installing the IE Plug-in and Login

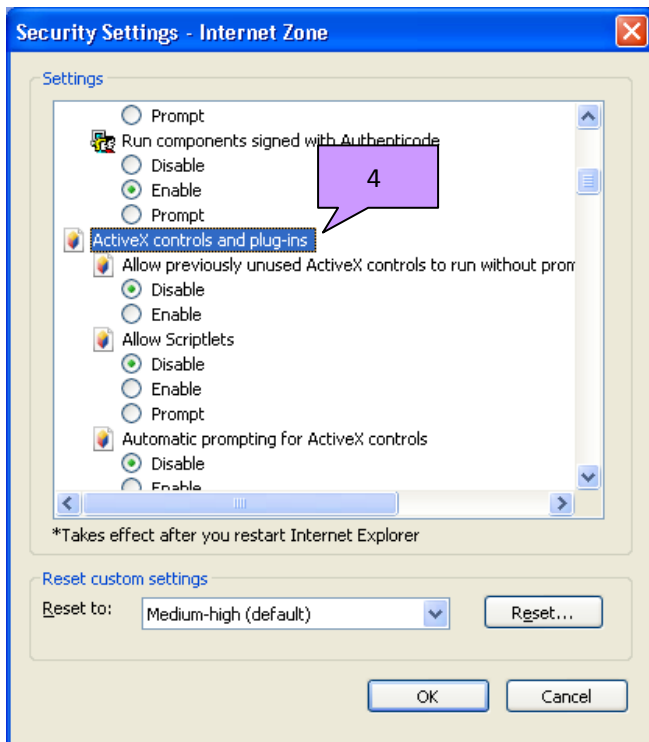
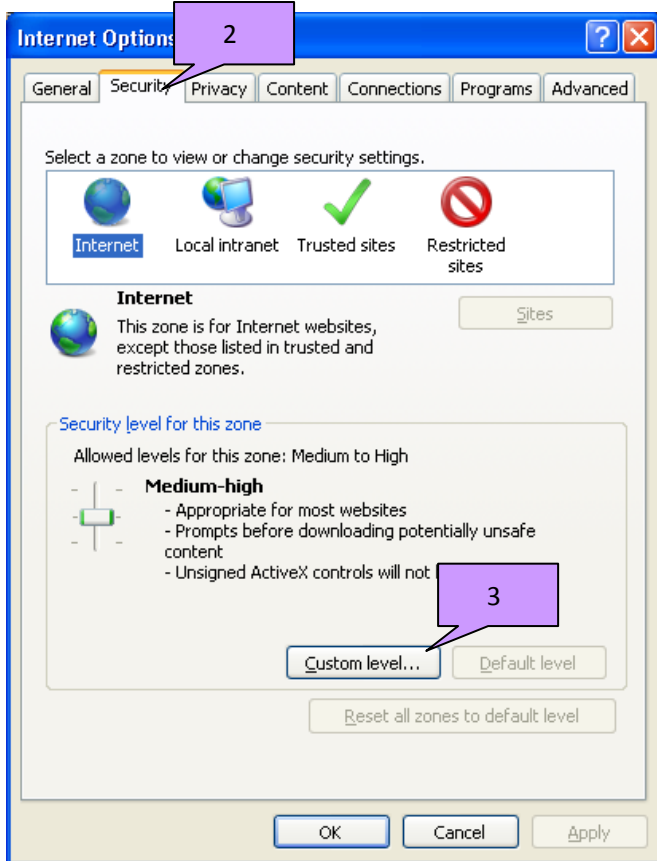
Note: please make sure your PC has installed Internet Explorer 6.0, DirectX 9.0 or higher version. Please turn off the Firewall and Antivirus Software if necessary. When login first time, if all the functions run properly, you could set the Security as the default level.

If login IE firstly, user should install a Plug-in that user can download it directly through IE.

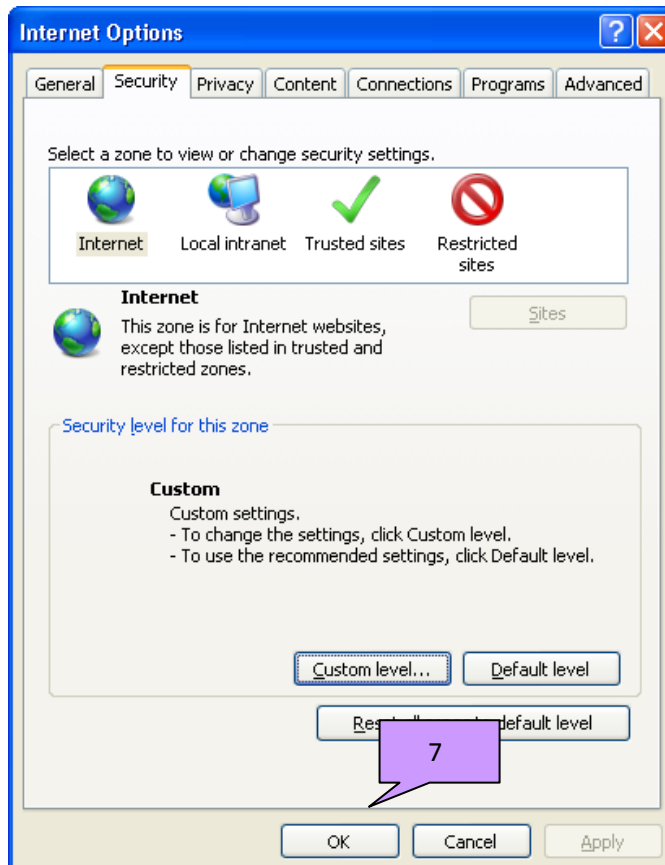
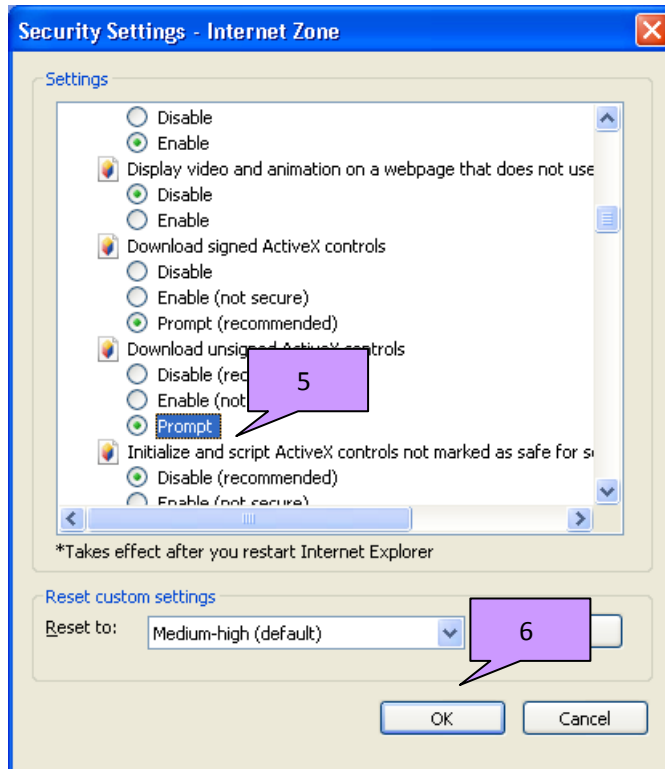
(1) Open IE Explorer, choose the option **Tool > Internet**.



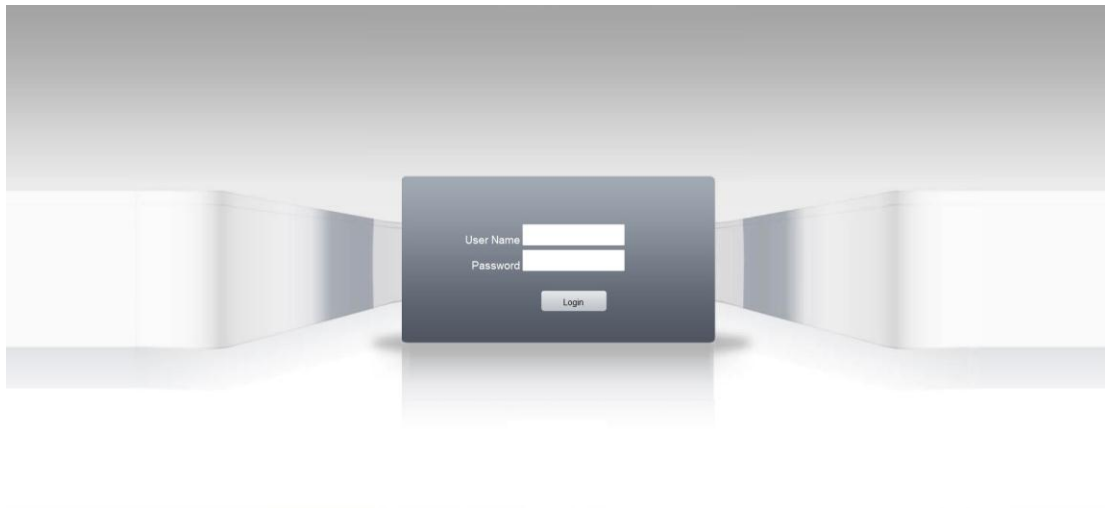
(2) Open **Internet Options**, and choose **Security > Custom level**, and then find **ActiveX controls and plug-ins**.



(3) Find **Download unsigned ActiveX control**, and choose **Prompt**. Then click **OK**.



After installed successfully, open the Microsoft Internet Explorer (IE), input IP address: <http://192.168.1.10> to visit LAN equipment for monitoring.



The default values are:

User name: admin

Password: no password

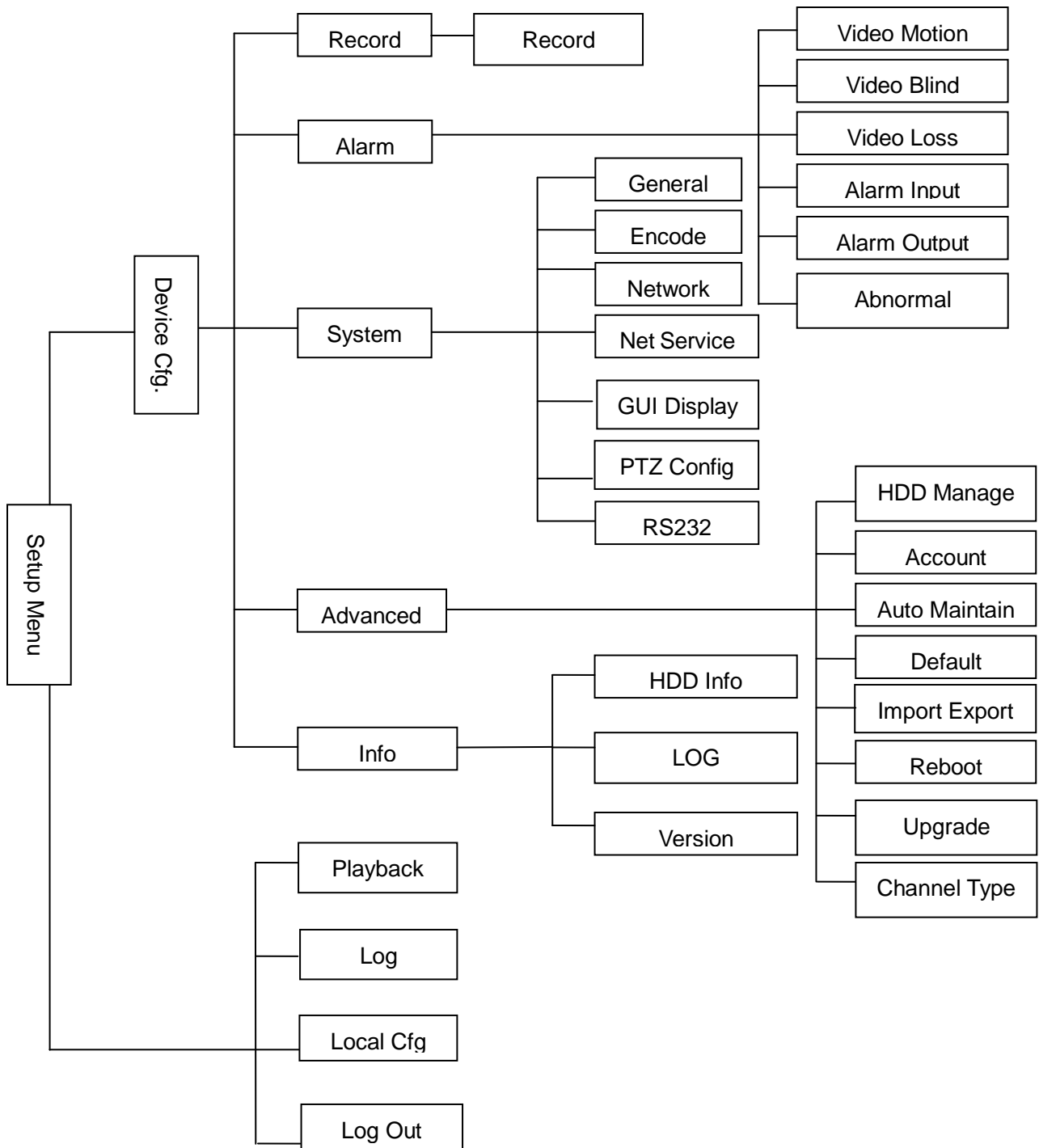
Note: for your system security, please modify your password after the first time login.

Modify password path: Device configure - Advanced- Account.

After inputs user name and password, user will enter the camera interface.

2. System Instructions

2.1 System Menu Tree



2.3 Main Menu

Toolbar



Menu	Playback	Record video inquiry and playback.
	Log	Display important event log and designate needed log.
	Device Cfg.	Manage the device configure.
	Local Cfg.	Manage the local setting.
	Log Out	User logout and reboot.

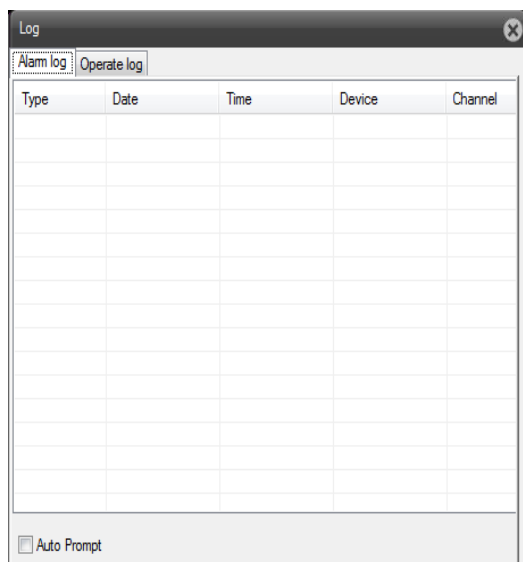
3. Operating of Main Menu

3.1 Playback

There are two modes to select: remote and local. If without TF card and micro SD card, it will not support remote playback. You can set the query mode by name or by time. After finish setting all these parameters, choose the channel and click Search to begin to playback.







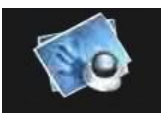

3.2 Log





















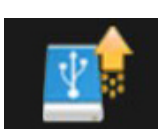


Alarm log: it can log the alarm type, date, time, device and channel.




Operate log: it can log the type, date, time, user and describe.

3.3 Device Configure

Main Menu	Sub Menu	Function
Record 	Record 	Setting record length and record status Time operated setting per day per week
Alarm 	Video Motion 	Including channel, enable/off, sensitivity, region, period, record channel, tour, PTZ activation, delay, etc.
	Video Blind 	Including channel, enable/off, sensitivity, period, alarm output, PTZ activation, delay
	Video Loss 	Including channel, enable/off, sensitivity, period, alarm output, PTZ activation, delay

	<p>Alarm Input</p> 	Setting the camera's alarm input parameter
	<p>Alarm Output</p> 	Setting the camera's alarm output parameter
	<p>Abnormal</p> 	Including event type, enable, show message & buzzer
<p>System</p> 	<p>General</p> 	Setting system time, date format, date separator, time format, language, HDD Full, HD-SDI DVR no. video standard, auto logout
	<p>Encode</p> 	Setting channel, compression, resolution, FPS, bit rate type, quality, bit rate, quality, frame interval, video/audio
	<p>Network</p> 	Setting net card, IP address, subnet mask, gateway, primary DNS, secondary DNS, media port, HTTP port, MAC and transfer policy etc.
	<p>Net Service</p> 	Setting IP filter, DDNS, email, NTP, PPPOE, ARSP, MOBILL MONITOR, WIFI, UPNP, etc.
	<p>GUI Display</p> 	Setting CAM name, time title, video status, anti-jitter, transparency, channel, region cover and time title and channel title etc.
	<p>PTZ Configure</p> 	PTZ control protocols, baud rate. Data bits, stop bits and parity
	<p>RS232</p> 	Including function, baud rate, data bits, stop bits and parity.

<p>Advanced</p> 	<p>HDD Manage</p> 	<p>HDD management, delete data and etc. Note: system will restart after setting HDD</p>
	<p>Account</p> 	<p>User group and account</p>
	<p>Auto Maintain</p> 	<p>Auto reboot system and auto delete old files</p>
	<p>Default</p> 	<p>Setting entries you want to default: select all, general, encode, record, alarm set, network, net service, GUI display, account, RS232 and camera parameters.</p>
	<p>Import Export</p> 	<p>Including configure import, configure export and log export</p>
	<p>Reboot</p> 	<p>Restore all to default or partially by selection Note: not for user account</p>
	<p>Upgrade</p> 	<p>Upgrade the system</p>
	<p>Channel Type</p> 	<p>Including the camera's hybrid mode</p>
	<p>HDD Info</p> 	<p>SATA interface status, capacity for each HDD and total, remaining capacity, video start/stop time, etc. Type: read-write disk, read-only disk, redundancy disk etc.</p>

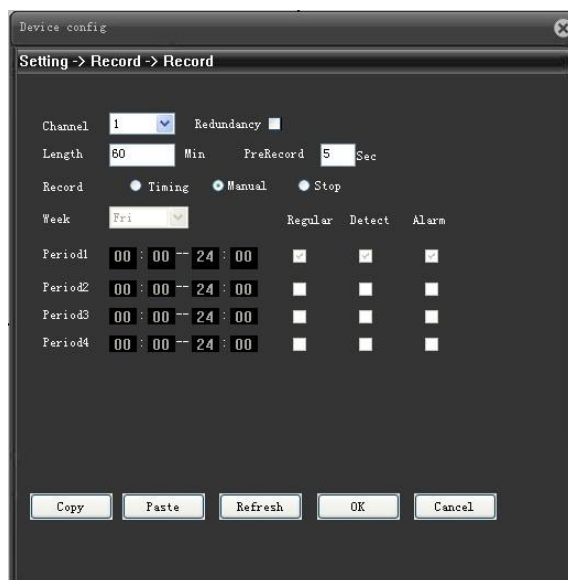
<p>Info</p> 	<p>LOG</p> 	<p>Display important event log and designate needed log.</p>
	<p>Version</p> 	<p>Display system hardware, software version and release date, etc.</p>

3.3.1 Record

It includes one item: Record.

Record

Set the recording parameters in the surveillance channel.



Channel: select the corresponding channel. Choose “all” option to set the entire channels.

Redundancy: select the recording file and backup in two hard disks. The one is read-write disk, another one is redundant disk.

Length: set the time length of each video file. The longest time is 120 minutes.

Prerecord: prerecord 1~30 seconds before the action. (File length is decided by the code stream)

Record: user can set video state: timing, manual and stop.

Week: user can select from Saturday to Sunday or all to record.

Period: set recording type: regular, detect or alarm. User can select every time you want to record, press ok, and then press refresh. Device configures setting is successful.

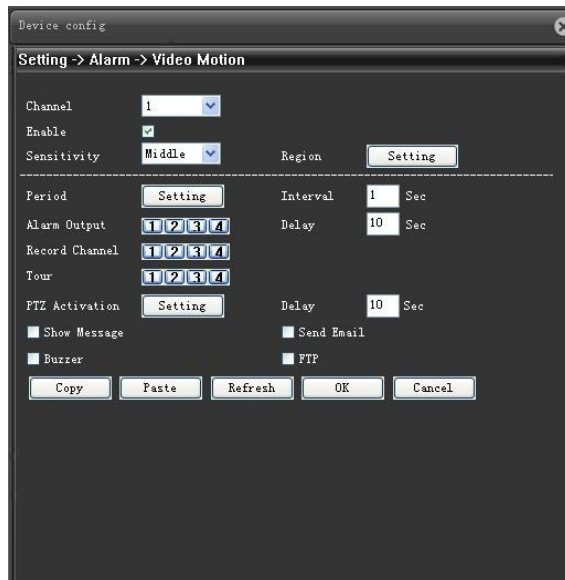
Note: this function is only available for camera with TF card.

3.3.2 Alarm

There are six submenus to choose in Alarm: Video Motion, Video Blind, Video Loss, Alarm Input, Alarm Output and Abnormal.

Video Motion

When system detects moving signals, it will send out motion detection alarm.



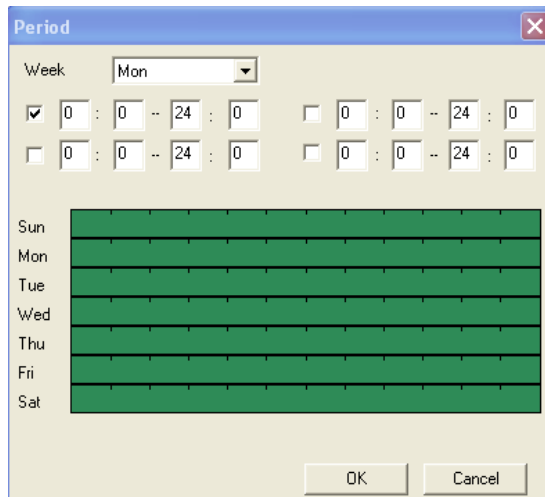
Channel: select the corresponding channel. Choose “all” option to set the entire channels.

Enable: When Enable is been selected, user can select the following elements.

Sensitivity: there are six levels to select: lowest, lower, middle, high, higher and highest sensitivity. The six-level has the highest sensitivity

Region: user can set the zones as the motion detection zone. Choose the region that needs to be watched, the blue part is under surveillance.

Period: Click setting button, you can see an interface is shown as below. Here you can set for business day and non-business day. You can set up four time period, but they can't be repeated. The linear graphics show the period, you can copy the setting to other days.

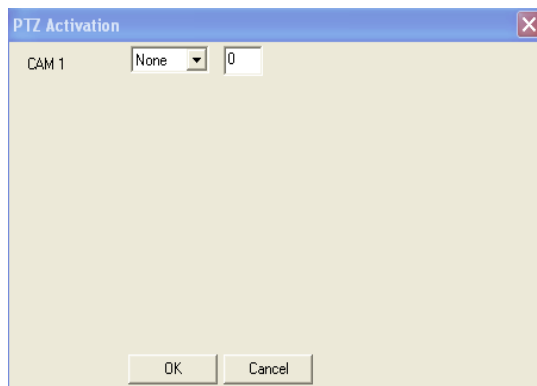


Alarm output: when alarm occurs, system enables alarm devices.

Record channel: Choose the channel. It can record when it occurs motion detection.

Tour: here you can enable tour function when alarm occurs. It is a one-window tour.

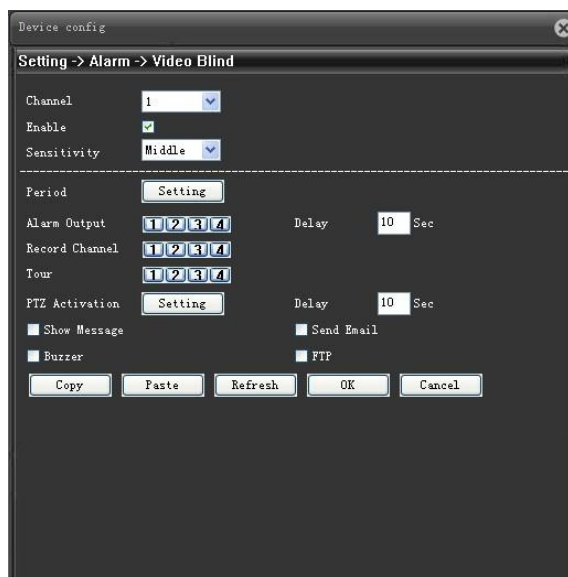
PTZ activation: here you can set PTZ movement when alarm occurs. Such as go to preset, tour & pattern when there is an alarm. Click "OK" button.



When video motion detection occurs, user can select the system to show message, buzzer, send email or FTP to alarm.

Video Blind

When someone viciously masks lens, the system can alert you to guarantee video continuity. Set the parameters as that of Video Motion.



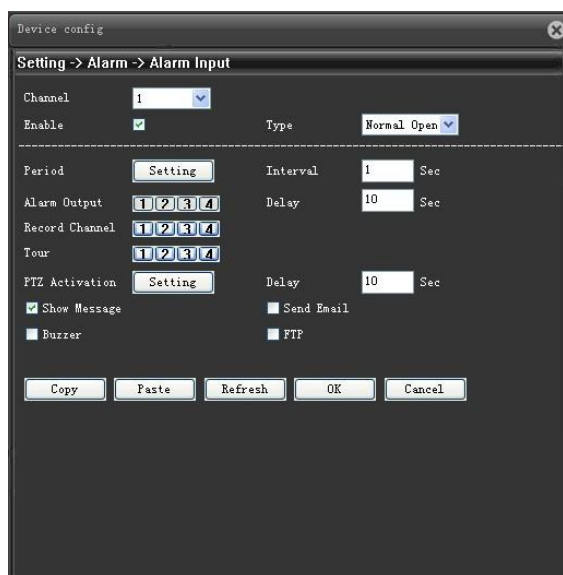
Video Loss

When video loss happens, you can select video loss or alarm output show information in local mainframe screen. Set the parameters as that of Video Motion.



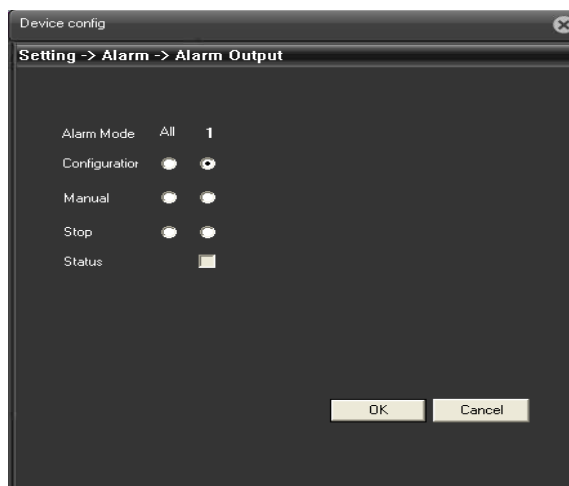
Alarm Input

Set the parameters and choose the channel. When video loss or video blind happen, the buzzer will alarm.



Alarm Output

Choose the mode as you request. After finish, click OK.



Alarm mode: user can select alarm mode.

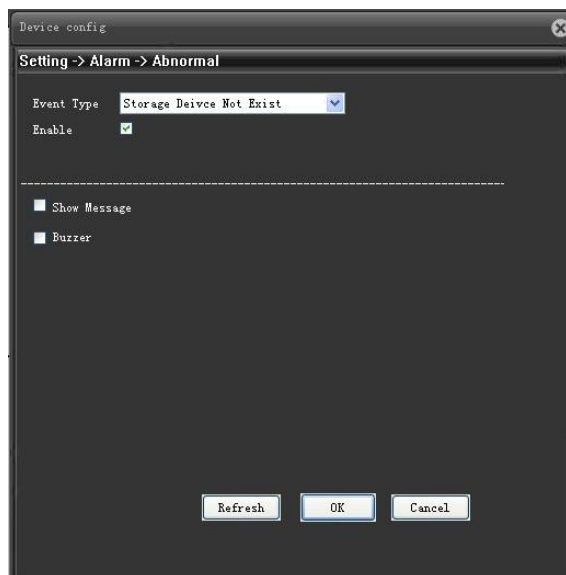
Configuration: select all or 1channel.

Manual: select all or 1 channel.

Stop: close alarm output.

Status: current device alarm output status.

Abnormal



Event type: storage device not exist, storage space lack alarm, storage device access failure, IP conflict and net about.

Enable: highlight means “on”

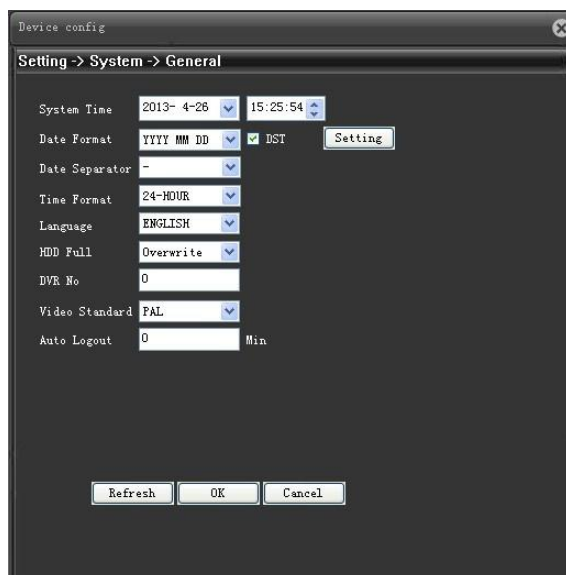
Show message: system can send out email to alert you when alarm occurs.

Buzzer: default is “off”. You can tick it as you request.

3.3.3 System

There are seven submenus in systems to select: General, Encode, Network, Netservice, GUI Display, PTZ Config. and RS232.

General



System time: here is for you to set system time

Date format: there are three types: YYYY-MM-DD: MM-DD-YYYYY or DD-MM-YYYY. “Y” is for year; “M” is for month; “D” is for day.

DST: Here you can set DST time and date. Please enable DST function and then click OK button.

Date separator: there are three denotations to separate date: dot, beeline and solidus.

Time format: 24-hour and 12-hour

Language: system supports languages. If “?” appears, it means that your computer system does not support the language.

HDD full: here is for you to select working mode when hard disk is full. There are two options: stop record or overwrite.

Stop or rewrite may be selected while no space for the disk. The condition of stopping recording is the present working disk is full or under covering and the next disk is non-empty. The condition of rewrite is the present working disk is full and the next disk is non-empty.

HD-SDI DVR No: when you are using one remote controller to control several HD-SDI DVRs, you can give a name to each HD-SDI DVR for your management.

Video standard: NTSC and PAL.

Auto Logout: here is for you to set proper user’s operation duration. Value ranges from 0 to 60 Minutes. User needs to re-login the system after time out.

Encode

Support dual stream: main stream and extra stream.



Channel: select the corresponding channel. Choose “all” option to set the entire channels.

Compression: H.264.

Resolution: 720, 1080P, D1, CIF. You need to choose 1080P.

FPS: PAL: 1-25 f/s; NTSC: 1-30 f/s.

Bit rate type: CBR and VBR

Quality: there are six levels: worst, worse, general, best, better, good. The sixth level has the highest image quality.

Bit rate: kb/s

Frame interval: set 1 frame, 2-12 optional.

Video/Audio: if user wants to use mobile or other low resolution products, you should select the video, and then you can see the image.

Note: user can select main stream or extra, if use computer, you can choose main stream, and if use mobile or Ipad, you should select extra stream.

Network



Net card: Wire Netcard.

DHCP Enable: highlight means select Dynamic Host Configuration Protocol;

IP address, Subnet mask, Gateway: the default is shown. You can modify as you request.

Primary DNS and Secondary DNS: same with the router DNS.

Media Port: configurable according to user's demand

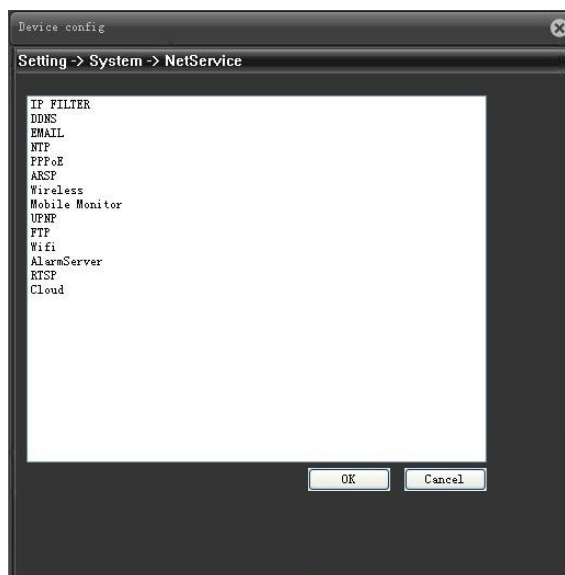
HTTP port: configurable according to user's demand

High Speed download: system can process the downloaded data first if you enable this function.

Transfer Policy: here you can select the priority between fluency and video qualities: Adaptive, Quality Preferred, Fluency Preferred and Network Priority.

Net service

You can set all these parameters to realize remote control.



DDNS: the same as the DDNS that you have registered successfully in the website <http://www.adipddns.com>

Mobile Monitor: it supports the system Apple, Android, Symbian, Blackberry, etc.

GUI Display

It includes CAM name, time title, channel title, video status, alarm status and so on.



CAM name: press Setting, set CAM name as you like.

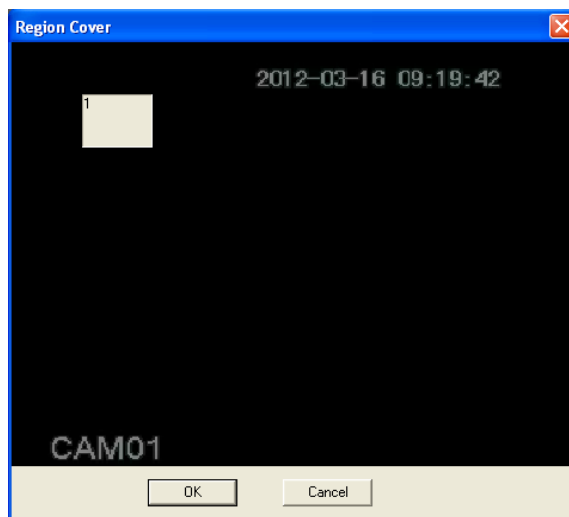
And also you can tick the time title, channel title, video status, alarm status and anti-jitter to display on the interface.

Transparency: here is for you to adjust transparency.

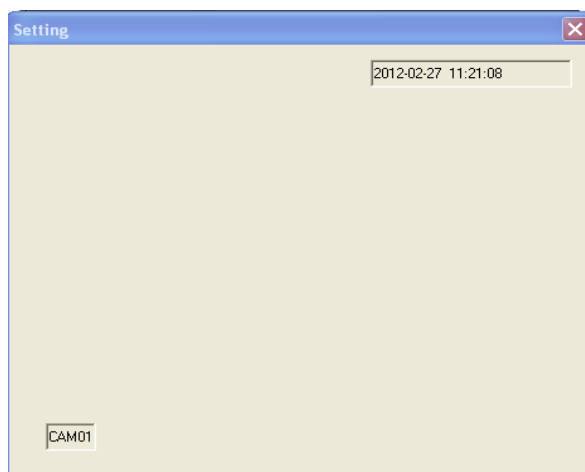
Channel: select the corresponding channel.

Region: here is for you to set window blanking section.

Highlight and tick means select.




Time title& Channel title: here user can set the position of the time title and the channel title.



Once you finish setting, user can right click the mouse and it will appear a window, press OK button and setting is finished.

PTZ Config.



The screenshot shows a 'Device config' window with a breadcrumb trail 'Setting -> System -> PTZ Config'. The window contains two columns of settings: 'PTZ Device' and 'RS485 Device'. The 'Channel' is set to '1'. The 'Protocol' is set to 'PELCOOD' and the 'RS485 Device' is set to 'NONE'. The 'Address' for both is '1'. The 'Baudrate' is '9600', 'Data Bits' is '8', 'Stop Bits' is '1', and 'Parity' is 'None'. At the bottom are 'Refresh', 'OK', and 'Cancel' buttons.

	PTZ Device	RS485 Device
Channel	1	
Protocol	PELCOOD	NONE
Address	1	1
Baudrate	9600	9600
Data Bits	8	8
Stop Bits	1	1
Parity	None	None

Channel: select the corresponding channel. Choose “all” option to set the entire channels.

Protocol: select corresponding PTZ protocol. Select the corresponding RS485 device, and there are 13 embedded protocols.

Address: RS485 device address

Baud rate: select corresponding baud rate

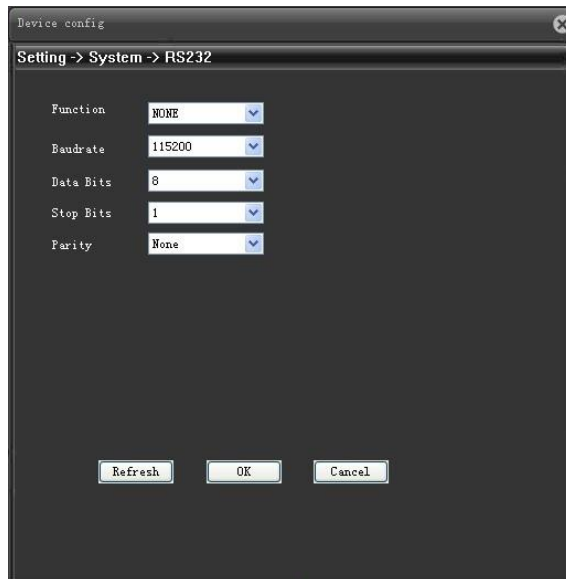
Data bits: select corresponding data bits

Stop bits: select corresponding stop bits

Parity: there are five options: none, odd, even, mark &space.

Note: please make sure that protocol, address and baud rate are compatible with PTZ camera protocol, address and baud rate. Otherwise camera cannot be controlled.

RS232



Function: there are various devices for you to select. For example, Console is for serial port or min-end platform to upgrade program; Keyboard is for you to control current device.

Baud rate: you can select proper baud rate.

Data bit: you can select proper data bits.

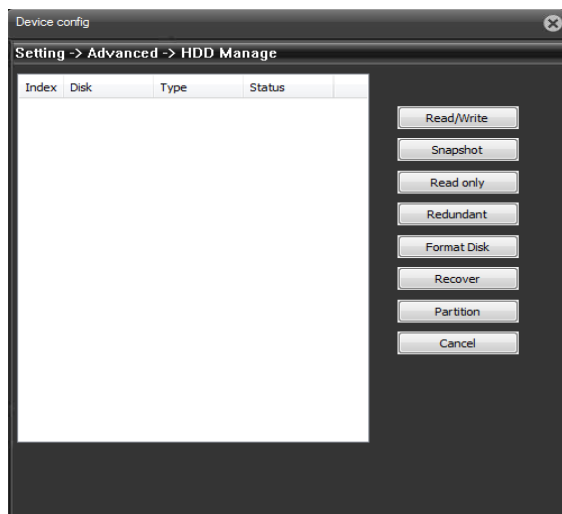
Stop bit: there are two values: 1 & 2.

Parity: there are 5 choices: none, odd, even, mark & space.

3.3.4 Advanced

Advanced menu includes: HDD manage, Account, Auto Maintain, Default, Import Export, Reboot, Upgrade and Channel Type.

HDD Manage



If selecting the first HDD, it displays current type, total capacity, and record time. You can modify HDD attribute, read-only disk, read-write disk, redundancy disk or delete all the data in the HDD. After all the setups please click OK button, system goes back to the previous menu. You can set proper mode for each hard disk from the dropdown list. When you use redundant backup function, you can set one or more redundant HDD(s). Please note you need to set at least one read-write disk, otherwise system will not record video.

Note: HDD Manage is only available for camera with TF card.

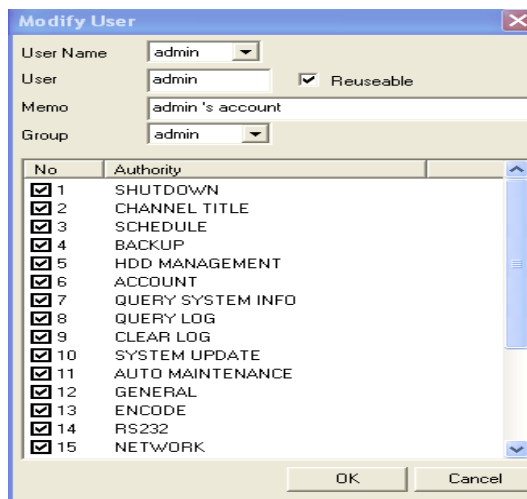
Account

The user name and group name can consist of six bytes: characters, number, underline, subtraction sign, dot, other characters are not allowed.

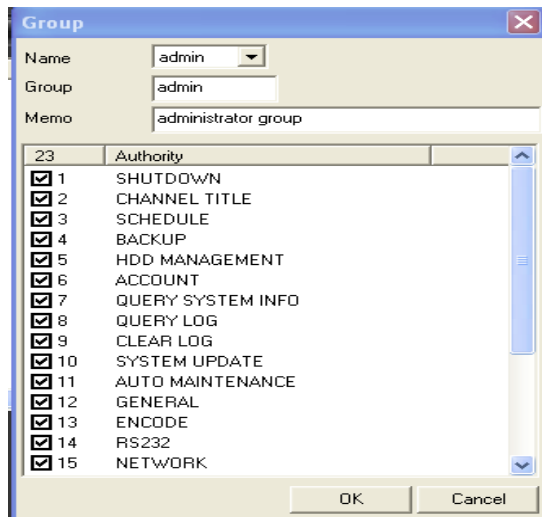
System account adopts two-level management: group and user. No limit to group or user amount.

User management adopts group and user 2 class ways, group name and user name cannot repeat; each user must belong to certain group; one user can belong to one group only.

Modify User: modify the existing user.



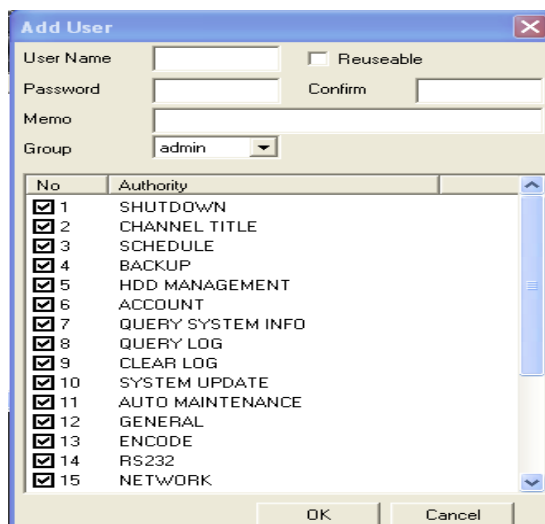
Modify Group: modify existing group.



Modify Password: select user name, input new password in new password blank and re-confirm password. Click OK button to confirm. Space bar is allowed except the first and last character. In addition, users who have users account can not only change the personal password but also change other users' password.



Add user: add group user and select corresponding rights.

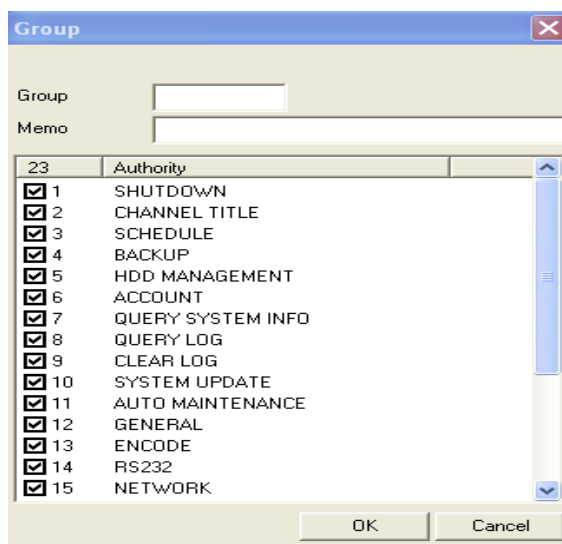


There are 2 default users: “admin” “guest”.

Reusable: this function allows multiple users to use the same account to login.

Once select the user to a group, the user authority cannot surpass this group authority property. We recommend that normal user’s authority lower than other advanced user.

Add group: add group and set group authority. Enter adding group menu page, confirm the group name, select 23 corresponding rights, including shut down device, channel title, schedule, backup, HDD management, PTZ control, account, query system info, query log info, clear log, system update, auto maintain etc.



Note: Delete user and delete group: user can choose user and group to delete.

Auto maintain

Here you can set auto-reboot system and auto-delete old files setup. You can select proper setup from dropdown list. After all the setups please click ok button, system goes back to the previous menu.

Default

You can highlight to restore default factory setup. Select all, General, Encode, Record, Alarm Set, Network, Net Service, GUI Display, RS232 and Account.

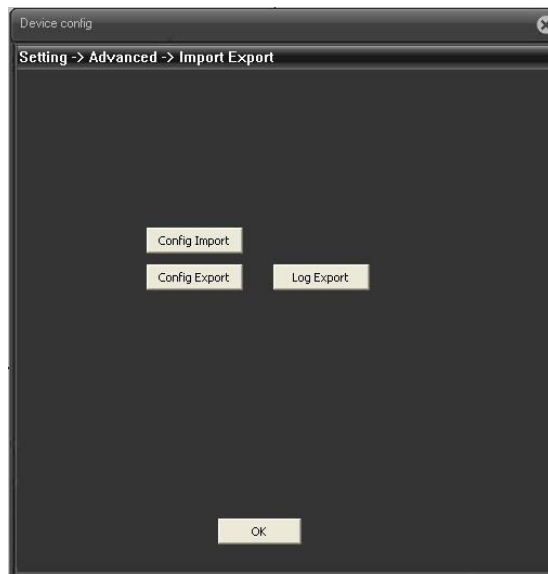


Import Export



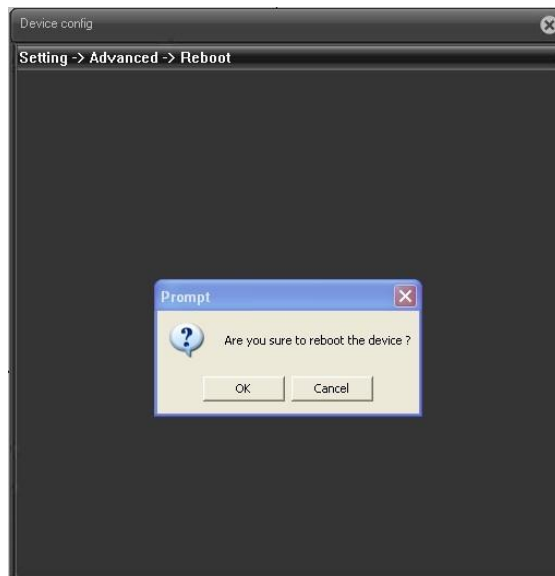
Note: if user wants to disconnect the current camera and connect any other cameras, user can firstly export configured file into your computer and saved the current camera's data. And then import configure file from computer for other new cameras. It can save configure you have set before.

Log Export: user can export the Log file.



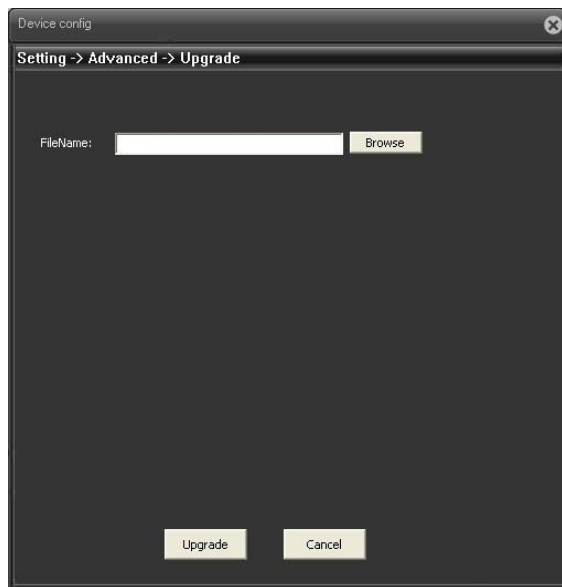
Reboot

Click it and reboot the system.



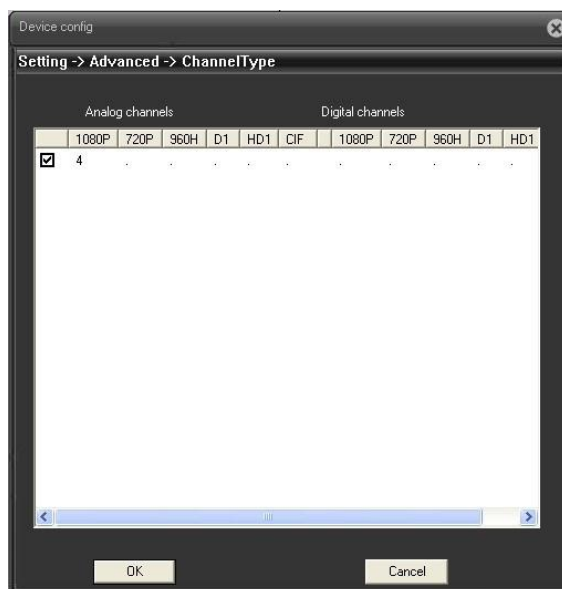
Upgrade

User can select the file to upgrade.



Channel Type

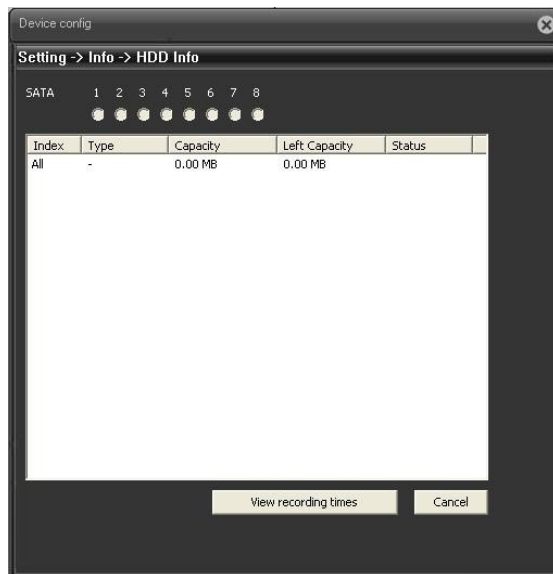
You can see the hybrid mode of your HD-SDI DVR.



3.3.5 Info

HDD Information

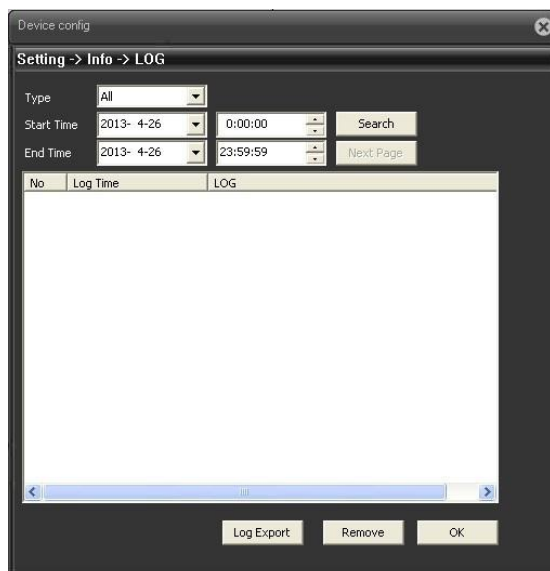
Here is to list hard disk type, capacity, left capacity and status.



Note: please remove the broken hard disk before you add a new one. Once there is a hard disk conflict, please check hard disk time and system time is the same or not. If it is not the same please go to setting then general to modify system time. At last, reboot the system to solve this problem.

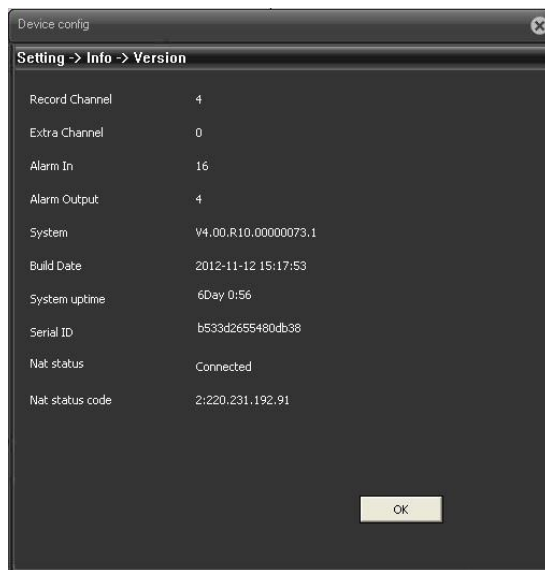
LOG

Here is for you to view system log file. System lists Log types which include all, system, configure storage, alarm event, week day, account and playback. Pleased select start time and end time, then click search button. You can view the log files. Click page up or down button to view if there are more than ten files



Version

Display system hardware's feature (Record Channel, Extra Channel, Alarm In, Alarm Output, etc.), software version and build date.

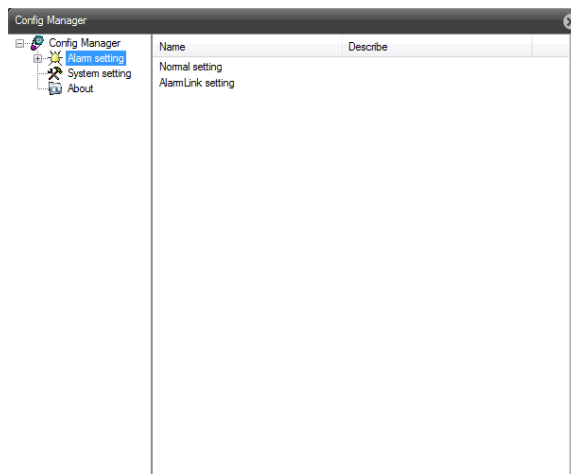


3.4 Local Cfg.

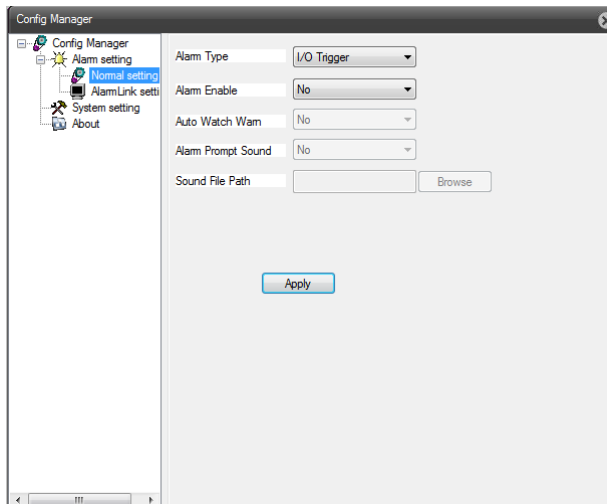
Configure Manager

There are three submenus included: Alarm Setting, System Setting and About.

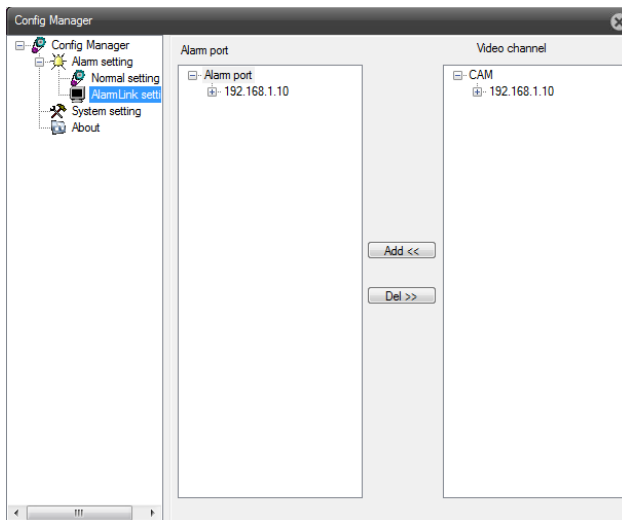
Alarm Setting: there are two modes to set the alarm: Normal Setting and Alarm Link Setting.



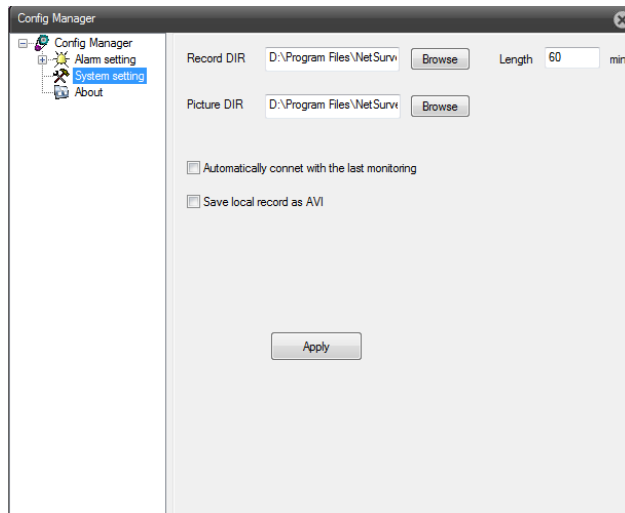
Normal Setting: user can adjust the alarm type, alarm type, auto watch warn, alarm prompt sound and etc.



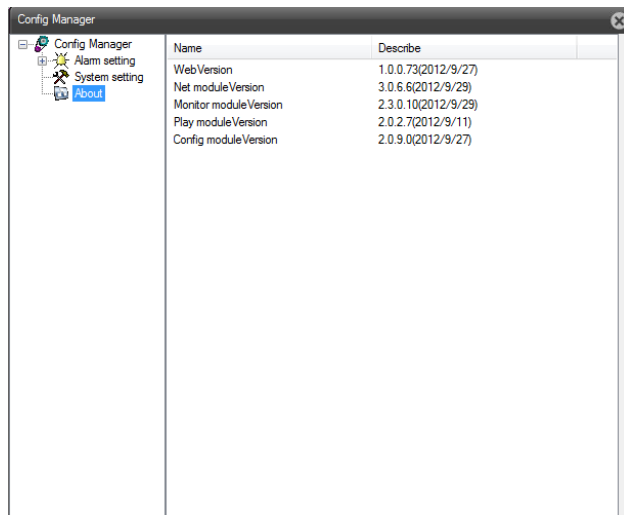
Alarm Link Setting: user can add the alarm port to select the video channel.



System Setting: including the Record DIR and Picture DIR, the location is C:\record and C:\ BMP, user can select the record save as AVI.



About: it is about the Version of WEB, net Module, Monitor module, play module and Configure module.



3.5 Logout

Exit menu, and you need to provide user name and password again when entering the menu next time.