
Center Manager System (CMS)

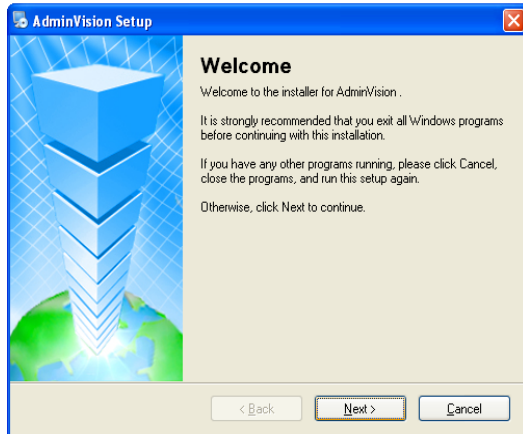
Center Manager System (CMS) is professional software used in multi-equipment monitoring, which is safe, convenient and stable. It is a better one that we advise users to use it. The browser comes with the system of IE browser.

Contents

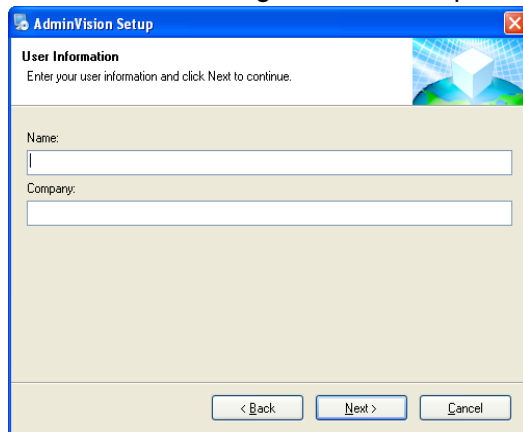
1. System Instructions.....	2
2. Add Device.....	5
3. Menu Configuration.....	8
4. Operation Area.....	9
4.1 Preview.....	9
4.2 Right-click Menu.....	9
5. Video Disk Status Area.....	9
6. PTZ Control.....	10
7. Color.....	11
8. System.....	11
8.1 Device Manager.....	11
8.2 Local Configure.....	11
8.3 Remote Configure.....	13
8.4 Account.....	14
8.5 Local Log.....	15
9. Record.....	16
9.1 Playback.....	16
9.2 Record Plan.....	17
10. Advance.....	19
10.1 Decoder.....	19
10.2 Map.....	19
10.3 Tour.....	22
11. Logout.....	23
12. Appendix.....	23

1. System Instructions Center Manager System (CMS)

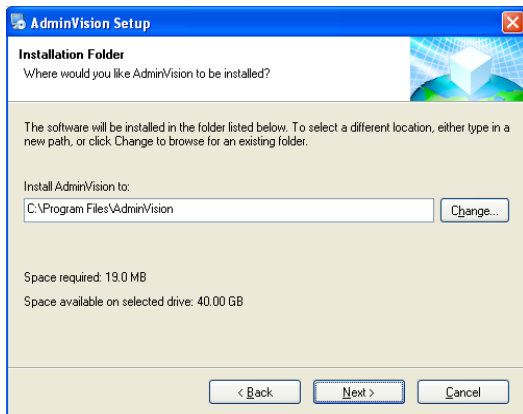
1. Firstly go to find the CMS → Admin Vision (supplied in CD → Software CMS → Admin Vision) and run it like below picture.

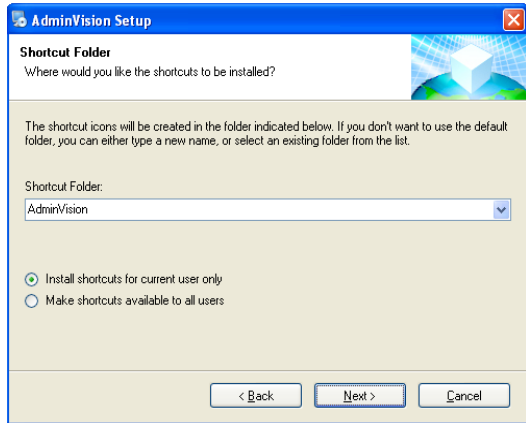


2. Click "next", then go to the below picture.

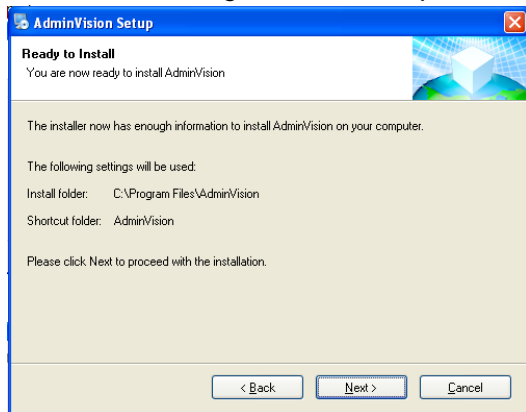


3. Click "Next", then go to the below picture. Click "change" to select setup path (default path "C:\Program Files\admin vision"), then click "Next" to select start menu folder like below picture.

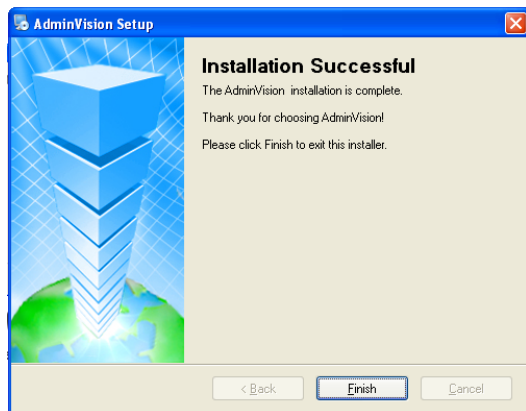




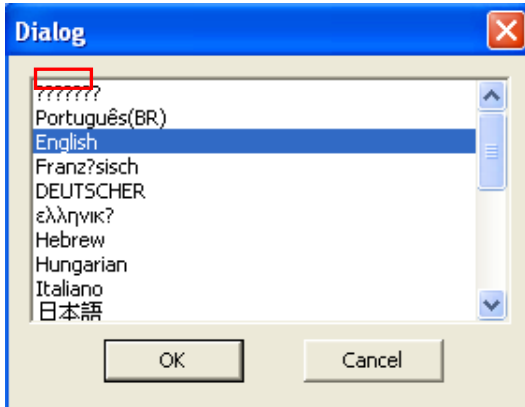
4. Click "Next" to go to the below picture.



5. Click "Finish" to end the setup.

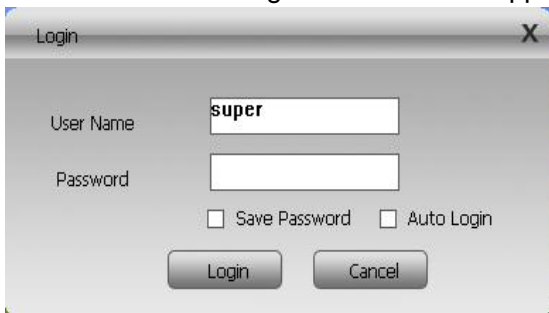


Then it will come up Admin Vision in the desktop. Click the icon and user can enter into to the CMS. It will display a "dialog" as below.



Note: it can support several languages, so you can choose the language. If it appears “?” it means your computer system lacks off the fonts.

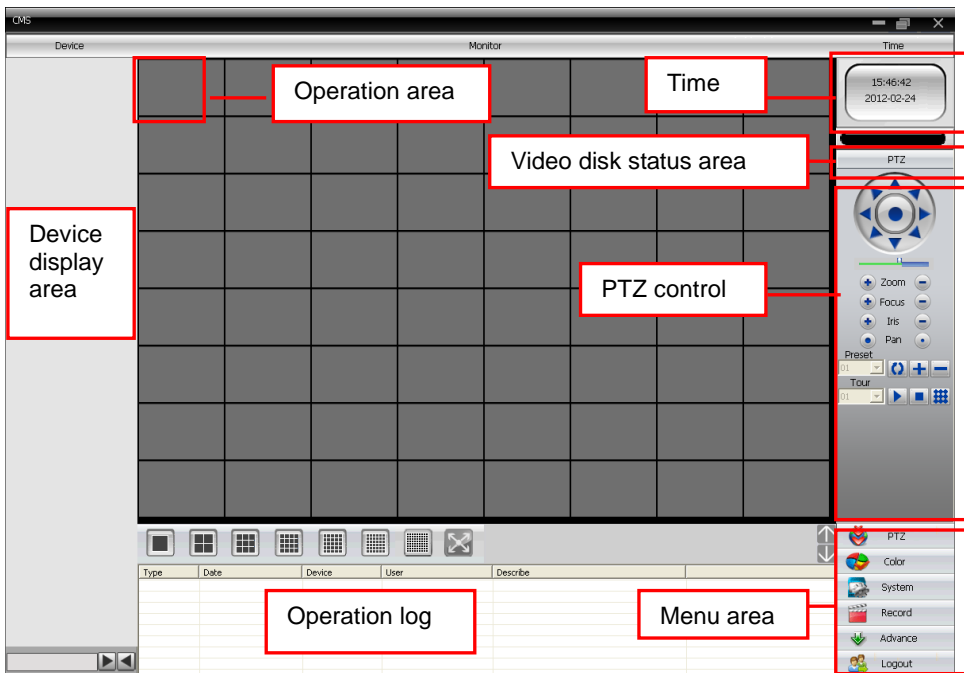
6. Click “OK”. The Login window would appear.



User name: super

Password: no password

CMS window will be open like the below picture.



Device display area

In this area, you can preview live screens by device and super account administrator setting, and click device name or channel group to change channels.

Operation area

You can preview live screens and setup parameters when system configuration and video searching in this area.

Time

You can set the time in this area.

Video disk status area

It can display the rest disk spaces where video files store.

PTZ control

You can control the zoom, focus and iris in this area.

Operation log

It will display any operation information when setup and operating.


Menu area

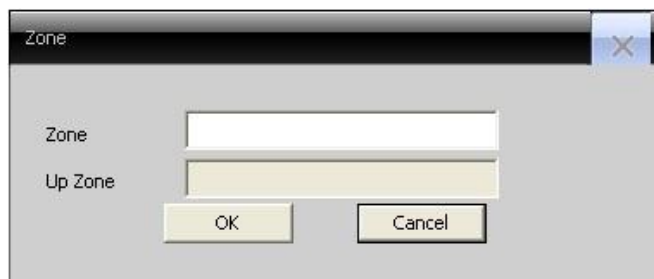
Users could set single menu and sub-menu in this area, select relevant menus to operate video surveillance system in the control center.

2 Add Device

Note: before monitoring, you should add the device that is used for monitoring. The following steps are about how to add the device.

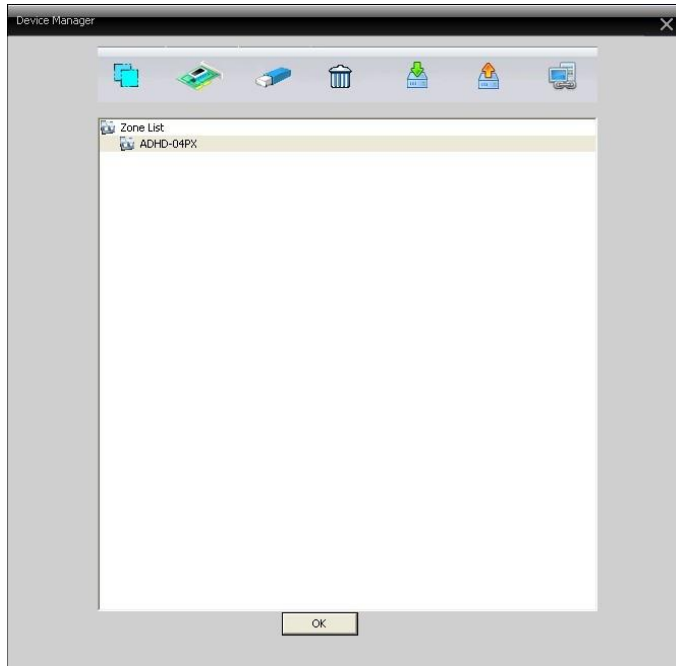


(1) Add area: click  to add zone. You can put any Zone name as you like it. Then click OK.





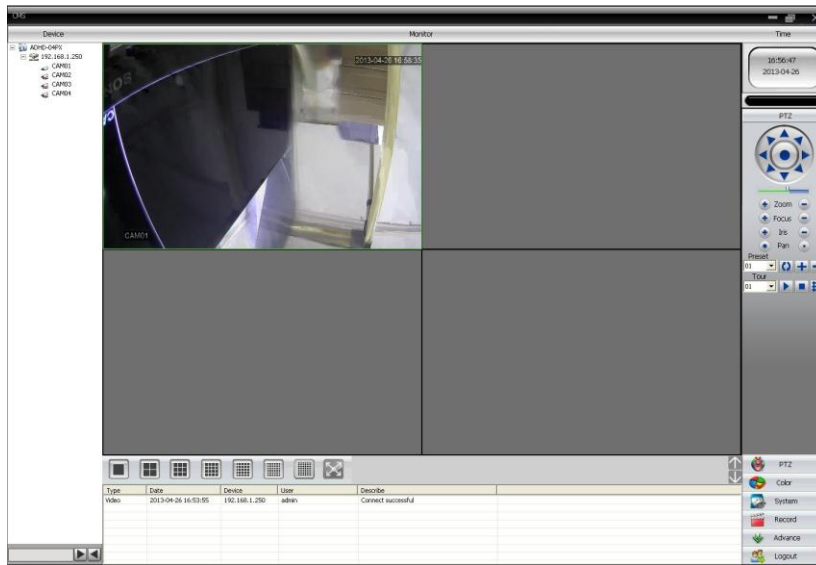
(2) Add device: click to add device, please see below.



(3) Click IP search and choose the IP address of the IP. Input the password (the default has no password) and click OK.



- (4) After successfully add the device, return to the first page and left click the device and double click the following camera channel; then the image will be displayed.



3. Menu Configuration

No.	First Menu	Second Menu	Third Menu	Function & Instruction	
1	Preview			Click "Monitor" to choose a preview of the screen, touring & switching among all channels and snapshot picture of the screen. Shut down/open preview menu.	
2	PTZ			Control the speed cameras to go up, down, left, right and stop by operating panel, adjusting speed, zoom, focus, iris and auto pan, preset and tour.	
3	Color			Set brightness, contrast, saturation and hue for video screen.	
4	System	Device manager	Add area	Add area for all devices.	
5			Add device	Add video surveillance devices.	
6			Modify	Modify device name, IP address, user name and password.	
7			Delete	Delete video surveillance devices.	
8			Devices import	Import devices.	
9			Devices export	Export devices.	
10			Connection test	Text the devices connection.	
11			Local Configure	Base configure	Select disk, disk list and logs maintenance.
12				Alarm setting	Setting alarm: I/O trigger, video motion, video blind and video loss.
13				DDNS configure	Include server IP and port.
14	Remote Configure		Refer to IE operation.		
15	Account	Group	Add and delete users' operating rights.		
16		User	Add, delete and manage users. Set user name, password and operating rights of menu.		
17		Local Log	Search alarm log and operation log in set time area.		
18	Record	Playback	Search record file and playback.		
19		Record plan	Set record time for every day.		
20	Advance	Decoder			
21		Map	It can visually show every camera's location and find current monitoring page directly		
22		Tour	Camera tour displays.		
23	Logout				


4. Operation Area


4.1 Preview



User can select different (1, 4, 6, 16, 25, 36, 64 and full screen) screens to monitor the camera.

Note:

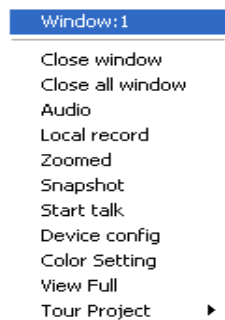
Click  to change the page (2 pages in each device); it can add 255 devices in total.

The following area displays information of type, date and device; right-click to choose , and you can clear all the information.

Type	Date	Device	User	Describe	
Video	2012-03-09 20:38:03	dv1004	admin	Connect successful	
System Ope...	2012-03-09 20:38:01	dv1004	admin	Disconnect	
Video	2012-03-09 20:35:38	dv1004	admin	Connect successful	
System Ope...	2012-03-09 20:05:58	dv1004	admin	Disconnect	
Video Motion	2012-03-09 20:05:57	dv1004	admin	Channel 1 Video Motion	
Video Motion	2012-03-09 20:05:55	dv1004	admin	Channel 1 Video Motion	
Video Motion	2012-03-09 20:05:53	dv1004	admin	Channel 1 Video Motion	
Video Motion	2012-03-09 20:05:33	dv1004	admin	Channel 1 Video Motion	

4.2 Right-click Menu

Double-click to open the device, and user can do below operation by right-click in operating area.



Close window: close the current screen.

Close all windows: close all the current screens.

Audio: click it and hear the voices from preset screens.

Local record: click it to record at current channel and save the record at the relevant disk.

Zoomed: Change the zoom of the images.

Snapshot: capture pictures from current channel at any time and save it to relevant disk.

Device configure: click it and go to device configuration interface.

Color setting: set the current screen color.


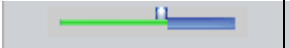








View full: full view the current screen.

Tour project: setting the tour project in "advance-tour", and user can tour the device in the current the screen.

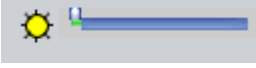
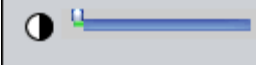

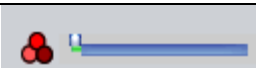
5. Video disk status area: it can show the information of the hard disk drives you choose, and the rest disk space where video files store

6. PTZ Control

Note: Only cameras are IP speed dome camera, user can control it at this center, turn up, down, left and right, stop running, adjust turning speed, zoom, focus and iris, preset and tour configuration. When user enables touring function, the speed cameras will tour according to preset.

No.	Button	Meanings
1		▲ means "turn"; ■ means "stop turning".
2		Drag this pole to adjust speed rate.
3		Click  to zoom in; Click  to zoom out.
		Click  to focus in; Click  to focus out.
		Click  to iris in; Click  to iris out.
		Click the icon to make the PTZ camera pan.
4		1. Set a location for the preset, calls the preset points, PTZ automatically turns to the setting position, add, delete and configure. User can set the preset. 2. User also can input 95 to control the OSD menu.
		Multiple preset points connected tour lines, call touring between points, and the PTZ run around on the line.


7. Color

No.	Button	Meanings
1		Brightness
2		Contrast
3		Saturation
4		Hue

Note: click  to resume Initial values.

8. System


8.1 Device manager

Add Area: click  to add zone.

Add Device: click  to add device.

Modify: Click  to modify device.

Delete Device: choose the zones or devices which you want to delete, and then

click . (**Note: please make sure the device is disconnected before modifying the device information.**)

Devices Import: choose the file you want to import, and then CMS will restart.

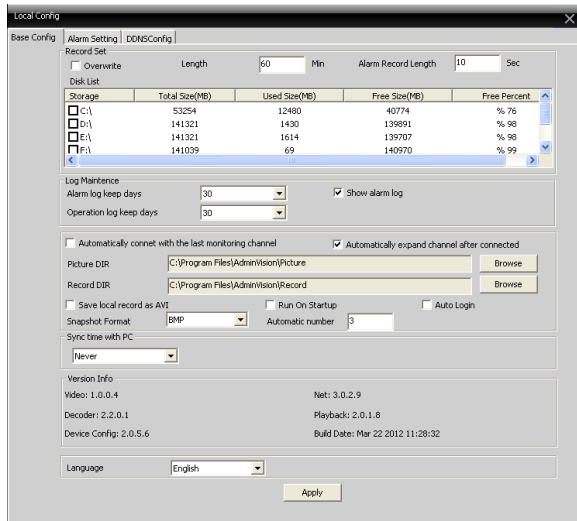
Devices Export: user can export the data. (**Note: If user changes a new CMS, or another computer, you can firstly export the data, and then import the data again. It can save the information you have stored in the old system.**)

Connection Test: test the device's status.

8.2 Local configure

There are three modes to select: Base Configure, Alarm Configure and DDNS Configure.

Base Configure: see below picture.



Overwrite: click it, and then it will cover the old records when HDD is full.

Length: time length for 1 record file.

Disk list: C, D, E, F.

Log maintenance: alarm and operation log keep days.

Picture DIR: picture storage location by snapshot.

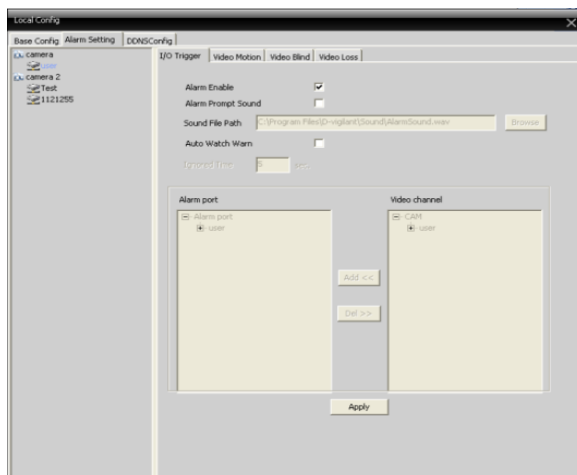
Record DIR: record storage location by local recording. The compression is H.264, and user can choose to save local record as AVI.

Sync time with PC: adjusting device and PC in order to make both at the same time.

Version info: CMS's version (video, net, decoder, playback and device configure).

Language: choose language for CMS. If it appears "?", it means that the computer system does not support the language.

Alarm setting: there are four modes to select: I/O trigger, Video Motion, Video Blind and Video Loss.



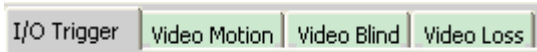
Alarm enable: click it to make sure all alarm functions available.

Alarm prompt sound: select any alarm prompt sound as you like.

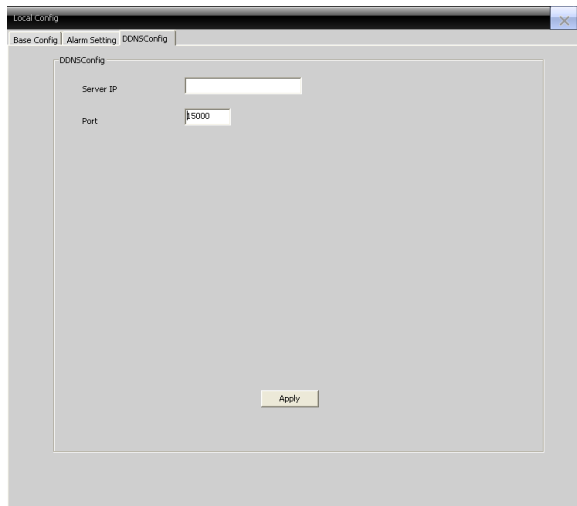
Sound file path: browse and choose prompt sound.

Auto watch warn: choose it to add following channels by alarm activated.

Note: Please go to choose alarm type first



DDNS configure: Server IP and port are displayed in this function.



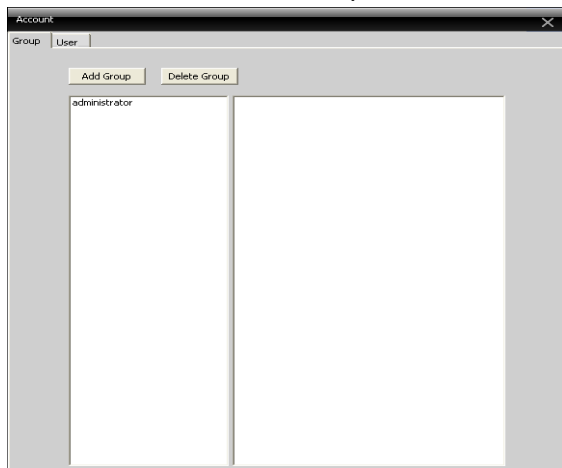
8.3 Remote configure

Select a device firstly, then set its parameters, please see below.

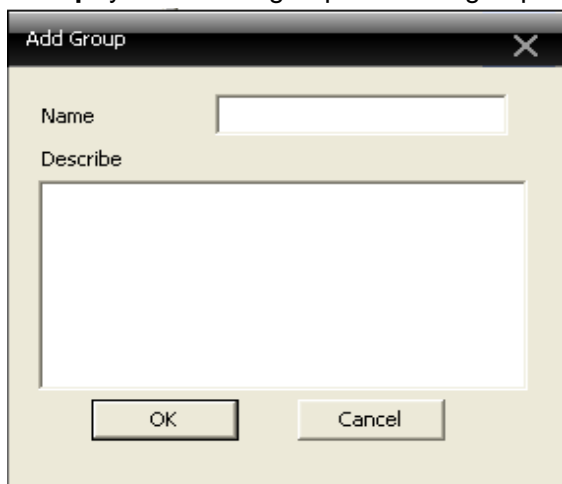


8.4 Account

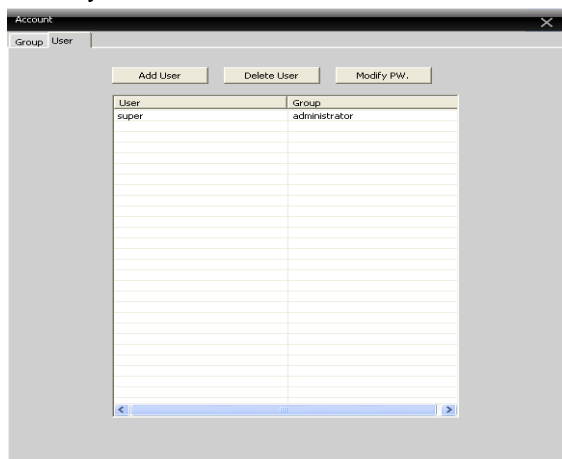
There are two modes: Group and User.

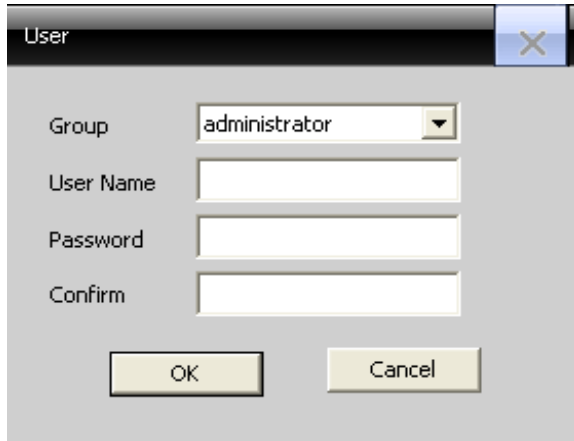


Group: you can add group or delete group.



User: you can add user, delete user and modify password.

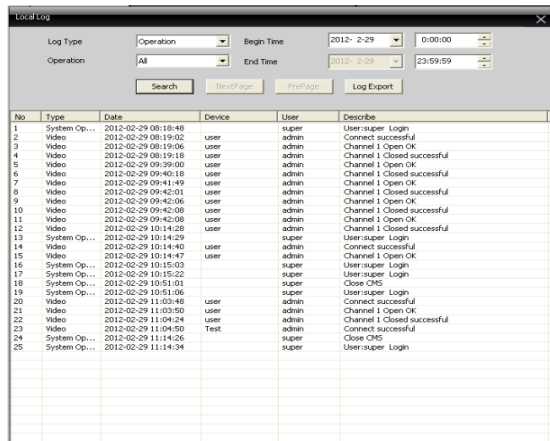




A dialog box titled "User" with a close button (X) in the top right corner. It contains four input fields: "Group" (a dropdown menu showing "administrator"), "User Name", "Password", and "Confirm". At the bottom, there are two buttons: "OK" and "Cancel".

8.5 Local Log

It mainly includes the Log Type, Begin Time, Operation, End Time, Search and Log Export.



The "Local Log" interface shows a table of log entries with filters at the top. The filters include "Log Type" (set to "Operation"), "Begin Time" (2012-2-29), "End Time" (2012-2-29), and "Operation" (set to "All"). There are buttons for "Search", "NewPage", "PrePage", and "Log Export".

No	Type	Date	Device	User	Describe
1	System Op...	2012-02-29 08:18:48		super	User:super Login
2	Video	2012-02-29 08:19:02	user	admin	Connect successful
3	Video	2012-02-29 08:19:06	user	admin	Channel 1 Open OK
4	Video	2012-02-29 08:19:18	user	admin	Channel 1 Closed successful
5	Video	2012-02-29 09:39:00	user	admin	Channel 1 Open OK
6	Video	2012-02-29 09:40:18	user	admin	Channel 1 Closed successful
7	Video	2012-02-29 09:41:49	user	admin	Channel 1 Open OK
8	Video	2012-02-29 09:42:01	user	admin	Channel 1 Closed successful
9	Video	2012-02-29 09:42:06	user	admin	Channel 1 Open OK
10	Video	2012-02-29 09:42:08	user	admin	Channel 1 Closed successful
11	Video	2012-02-29 09:42:08	user	admin	Channel 1 Open OK
12	Video	2012-02-29 10:14:28	user	admin	Channel 1 Closed successful
13	System Op...	2012-02-29 10:14:29		super	User:super Login
14	Video	2012-02-29 10:14:40	user	admin	Connect successful
15	Video	2012-02-29 10:14:47	user	admin	Channel 1 Open OK
16	System Op...	2012-02-29 10:15:03		super	User:super Login
17	System Op...	2012-02-29 10:15:22		super	User:super Login
18	System Op...	2012-02-29 10:51:01		super	Close CMS
19	System Op...	2012-02-29 10:51:06		super	User:super Login
20	Video	2012-02-29 11:03:48	user	admin	Connect successful
21	Video	2012-02-29 11:03:50	user	admin	Channel 1 Open OK
22	Video	2012-02-29 11:04:24	user	admin	Channel 1 Closed successful
23	Video	2012-02-29 11:04:50	Test	admin	Connect successful
24	System Op...	2012-02-29 11:14:26		super	Close CMS
25	System Op...	2012-02-29 11:14:34		super	User:super Login

Log Type: there are two log types to select: operation and alarm.

Time: user can set the time to log.

Operation: there are different types to select: all, video, playback, talk, backup and user manager, map, client configure.

Device Configure: system operation.

Search: user can search the log, and all the information would display in the interface.

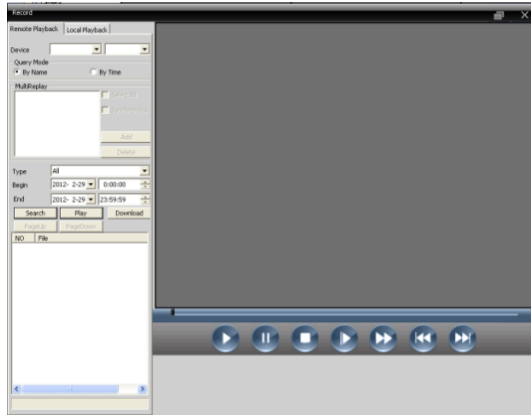
Log Export: user can export the log into the computer, and it will save the log in the form of TXT.

9. Record

There are two modes to select: Playback and Record Plan.

9.1 Playback

User can playback the video you have recorded, and there are 2 playback modes to select---remote playback and local playback.



Remote playback: playback at device-side.

Local playback: playback at client-side.

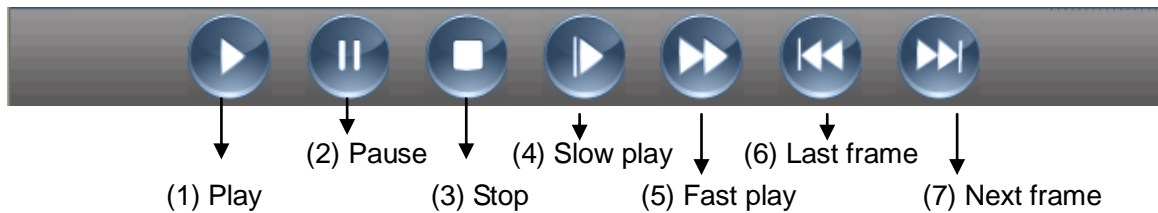
Device: user can choose the device to playback.

Query mode: by name and by time.

Type: there are five types to select: all, alarm record, detect record, general record and manual record.

Search: user can search the device.

Button Instruction

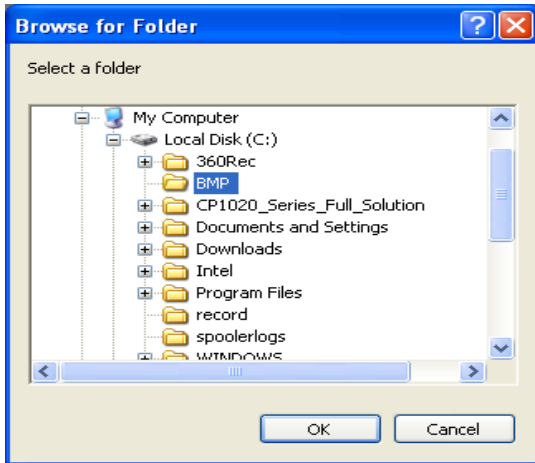


Download & Backup

User can playback record files at set time and channels, select record files, click "Download/Backup" and select "save directory".

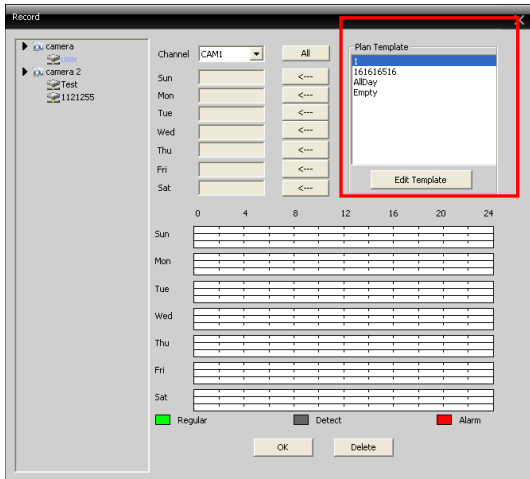
Note: remote playback----download

local playback---backup

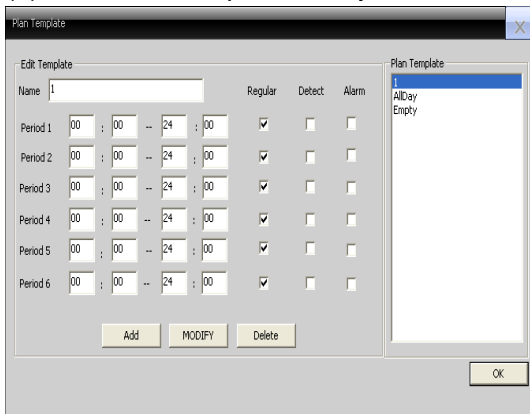


9.2 Record plan

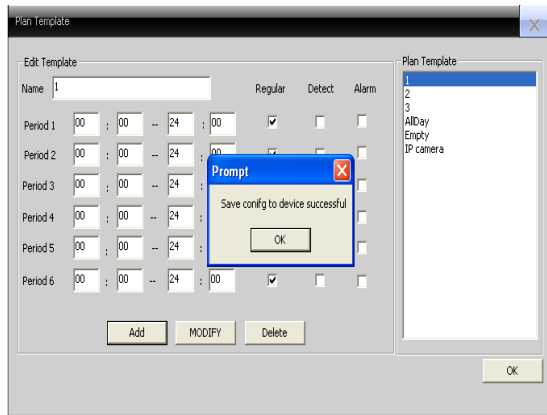
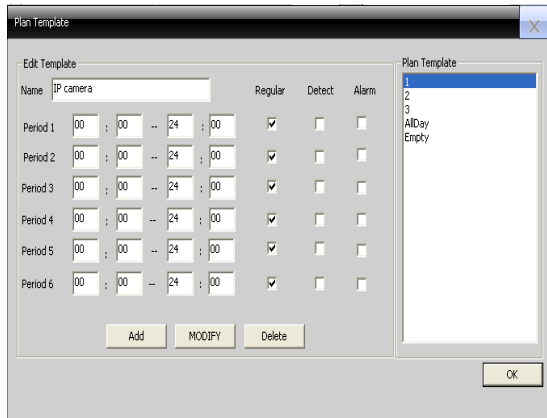
(1) Set your record plan, please see below picture.



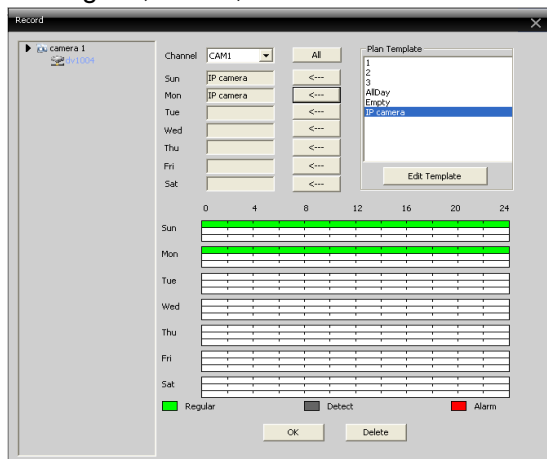
(2) Press edit template, and you will see below picture.



Set name, period time and tick regular, detect, or alarm; press “add”, and then camera name will be displayed in the “plan template”.



(3) After add pan template successfully, press “OK”, it will return the record interface. Import the plan template in the week, from Monday to Sunday, according to requirement to tick regular, detect, or alarm.



Note: After set record plan, If it needs to record, please make sure the below 3 points.

1. Choose disk for recording at local configure.
2. Make sure the device is connected to network.
3. Make sure local computer is always open.

10. Advanced

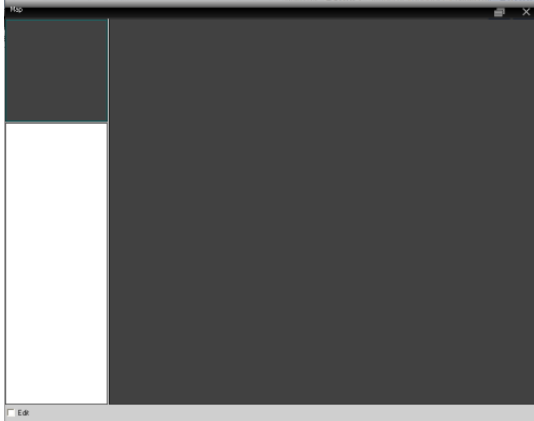
It contains three options---Decoder, Map and Tour.

10.1 Decoder

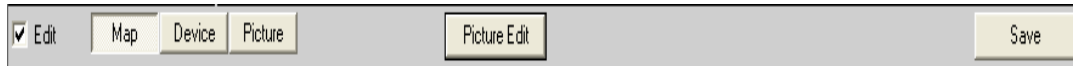
This function cannot operate in this situation.

10.2 Map

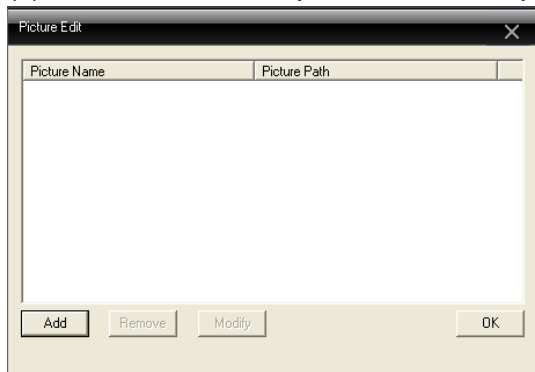
Map is a plan for simulating live screen. User can use it to add & delete cameras and set e-map alarm activation, please see below picture.



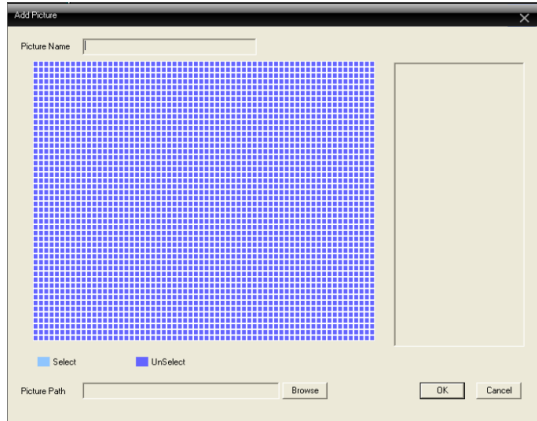
(1) Tick "Edit" first, please see below picture.



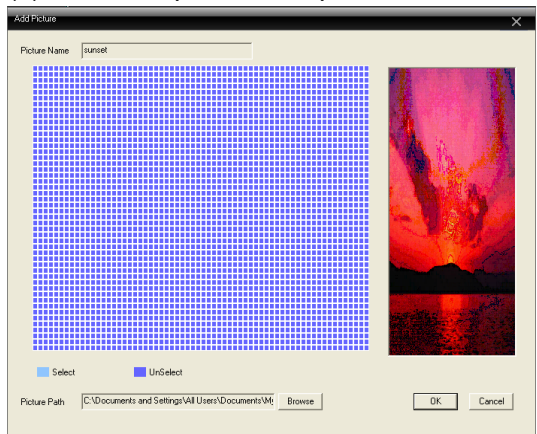
(2) Click "Picture Edit", please see below picture.



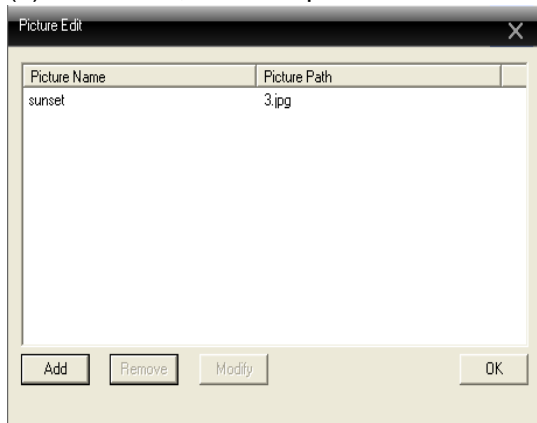
(3) Click "Add" to add picture, see below picture.




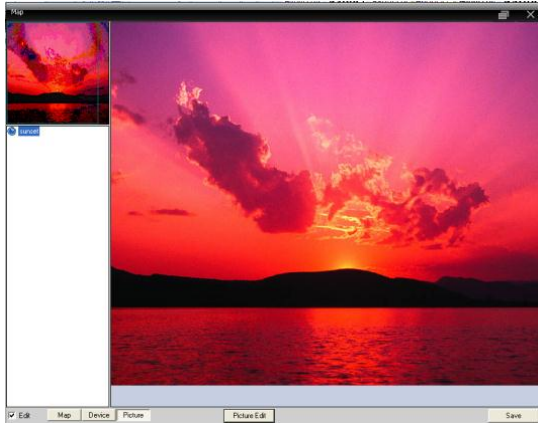
(4) Browse a picture, set picture name.



(5) Click "OK", return to picture edit.




(6) Click "OK", return to map. Click  and drag the picture to the right side please see below picture.

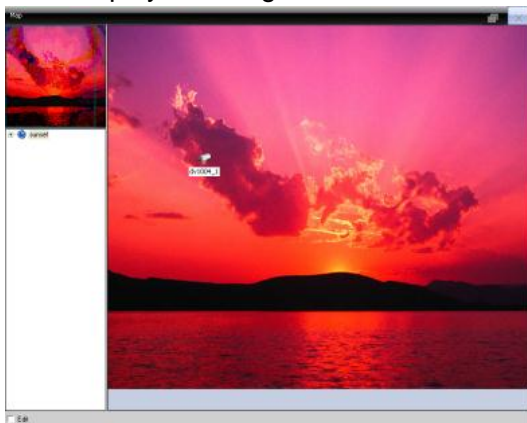


(7) Click "Device" to drag device to the map, and then the channel name will appear at the map.



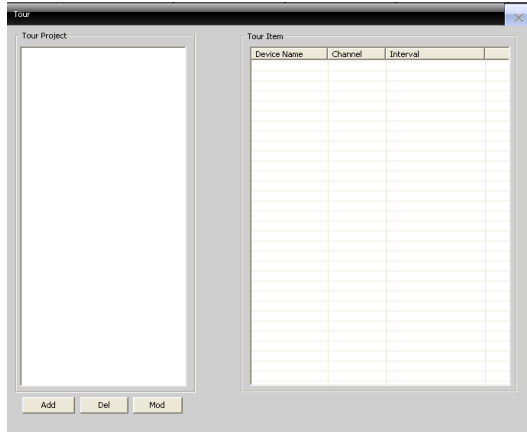
(8) Click "save" to save what you have set, at that time, the camera  cannot work.

Do not select "edit", and double-click the icon , the cross would be disappeared, and it will display the image of the device.

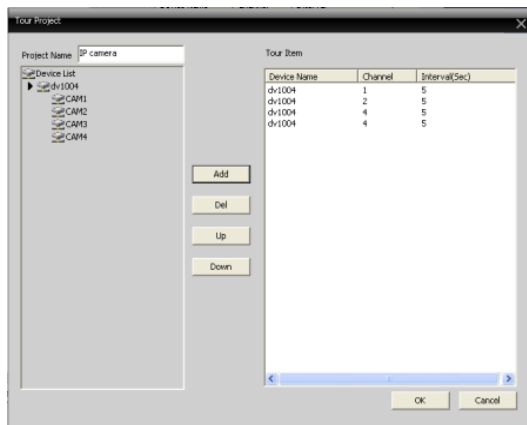
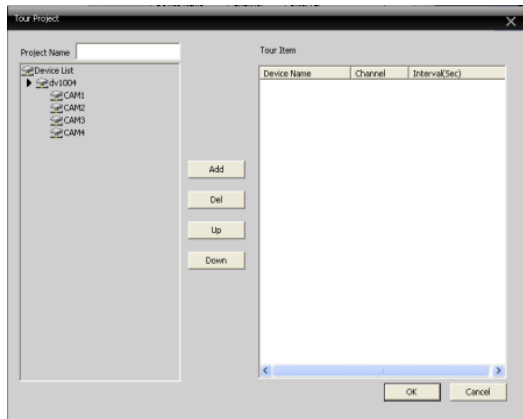


10.3 Tour

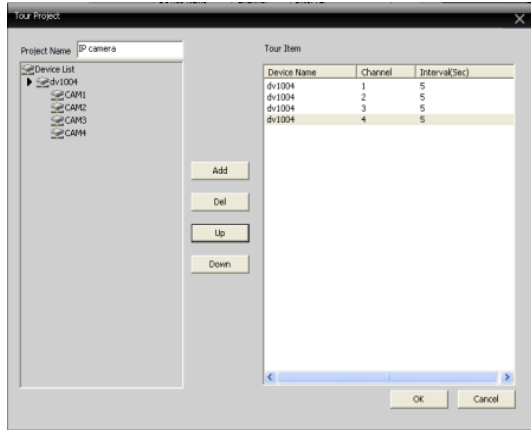
User can view different devices through tour.



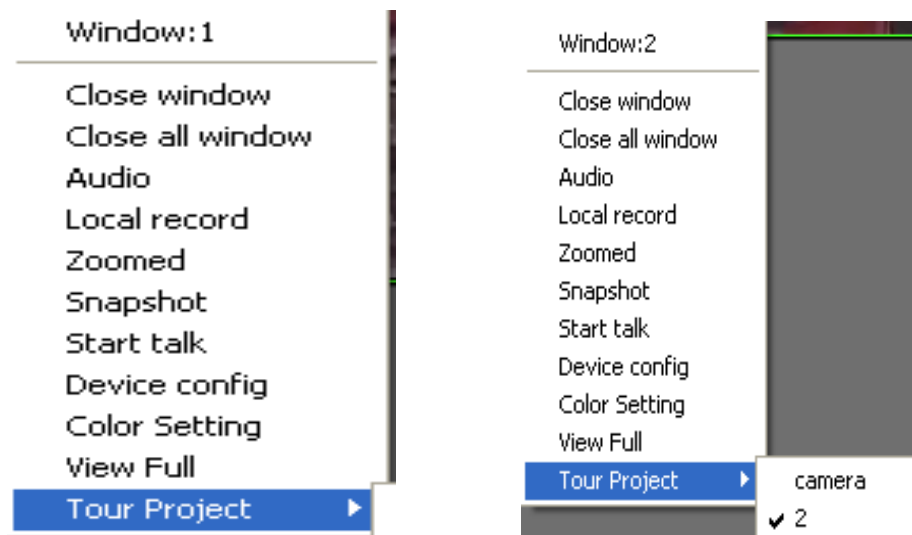
(1) Click “ADD” to set the tour project. User should add the project name and select camera channels you want to tour, then click add, you can modify the interval, if you finish this setting, then click OK.



Users can adjust the sequence of the device by pressing up and down.



(2) After user has added the tour project, you can tour the device in the monitor, right-click the operation area, and it will be displayed as below.



11. Logout

Click logout to exit the system.

12. Appendix

Abbreviations

Abbreviation	Full name
CMS	Center Manager System
PTZ	Pan/Tilt/Zoom
TCP/IP	Transmission Control Protocol / Internet Protocol